

Asmuss South Island Ltd

Pipeline Product Catalogue & Price List

February 2009



Australian
Standard



60-70 Detroit Drive, Rolleston, P.O. Box 86016, Rolleston West, Rolleston, Christchurch, New Zealand
Ph. (03) 347-1568, Fax. (03) 347-1573, Email: (name)@asmuss.co.nz

Fittings Division

Asmuss South Island Ltd
70 Detroit Drive
P.O. Box: 86016
Rolleston West, Rolleston
Christchurch
Ph. (03) 347-1568
Fax. (03) 3471573
0800-ASMUSS
0800-276877

<u>Name</u>	<u>Position</u>	<u>Mobile</u>	<u>Email</u> (@asmuss.co.nz)
Kellum Cochrane	Product Manager	021-660-146	Kellum
Mike Anderson	Sales		Mike
Kevin Diggs	Sales Rep	021-608-377	Ian
Gary Smith	QA Manager		Garys

Steel Divisions

Christchurch Branch:
Asmuss South Island Ltd
60 Detroit Drive
P.O. Box 86016
Rolleston West
Rolleston
Christchurch
Ph. (03) 347-1568
Fax. (03) 347-1573

Dunedin Branch:
Asmuss South Island Ltd
Cnr White & Buller Streets
P.O. Box 2441
South Dunedin
Dunedin
Ph: (03) 477-2323
Fax: (03) 477-2321

Nelson Branch:
Asmuss South Island Ltd
8 Saxton Road West
Stoke
Nelson
Ph: (03) 538-0351
Fax: (03) 538-0349

Contents

<u>Category</u>	<u>Page</u>
Reference_____	5-10
Sluice Valves/Service Valves_____	11-14
Fire Hydrants & Risers_____	15-18
Asmuss Waterworks Products_____	19-20
Adaptors_____	21-23
Bends_____	24-31
Pipe Straights_____	32
Reducers_____	33-37
Tees_____	38-41
Blank Flanges_____	42
Gibaults, Posi Couplers & Posi Adaptors_____	43-49
Tapping Bands_____	50-53
End Caps_____	54
Dressing Sets_____	55
Irrigation_____	56-60
Vinindex/Mallet Products_____	61-66



**Australian
Standard**

Note:

Where applicable all items offered include required sealing rings and fasteners (eg gibaults & socket fittings etc.).

Specify Series 1 or Series 2 PVC socket rings required at time of order.

Specify Coating required at time of order.

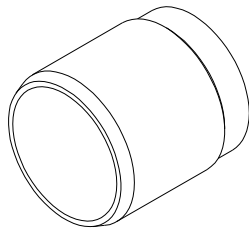
Unless otherwise stated all sealing rings are natural rubber.

Unless otherwise stated all fasteners are galvanised.

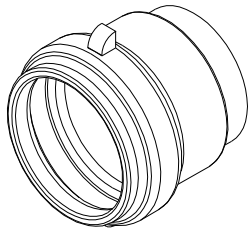
If any item is unavailable at time of order we will notify you.

All prices stated ex works, excluding G.S.T.

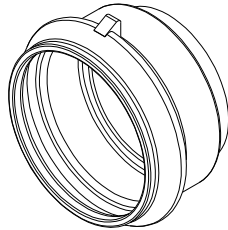
Reference



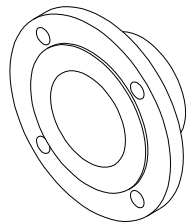
-Spigot Ends



-S1 Socket Ends



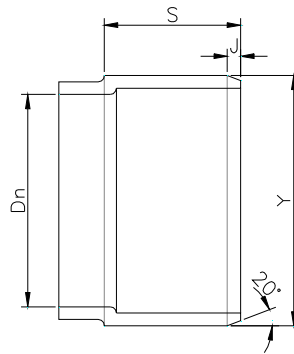
-S2 Socket Ends



-Flange Ends (incl. drilling details)

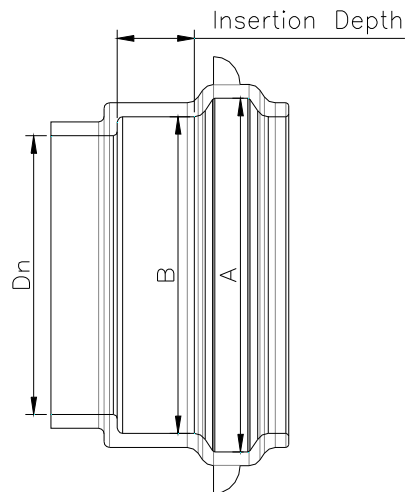
-Pipe OD's

Spigot Ends Details



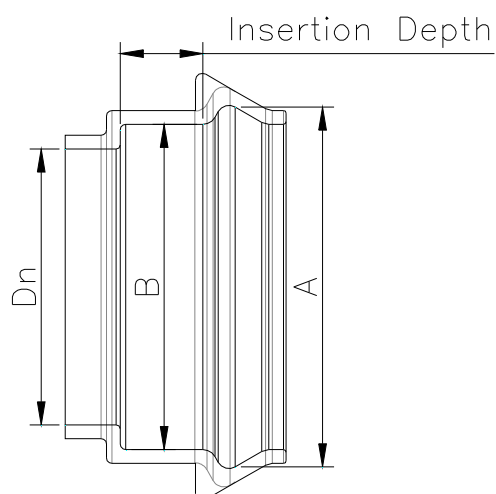
Dn	S	J	Y	Tolerance
80	89	10	96	+1, -2
100	102	10	122	+1, -2
150	102	10	177	+1, -2
200	115	10	232	+1, -2
225	115	10	259	+1, -2
250	115	10	286	+1, -2
300	115	10	345	+1, -2
375	140	16	426	+1, -2

Series 1 PVC Socket Details



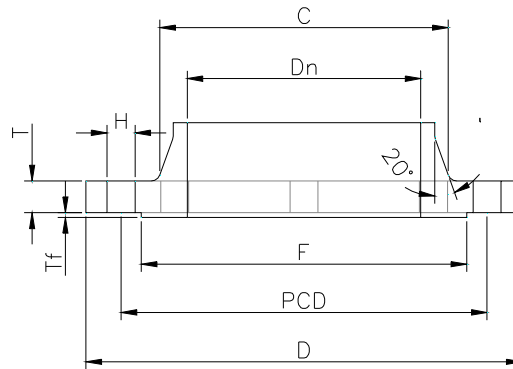
Dn	A	B	Insertion Depth
80	106.6	89.8	45
100	134.5	115.4	45
125	163.5	141.5	48
150	184.4	161.7	50
175	226.9	202.0	55
200	253.7	227.2	58
225	280.5	252.4	63
250	315.7	283.6	71
300	352.3	317.2	69
375	446.0	402.0	75

Series 2 PVC Socket Details



Dn	A	B	Insertion Depth
100	146.2	125.0	47
150	205.0	180.0	52
200	261.0	236.0	60
250	321.5	292.0	71

Flange End Details



Dn	D	F	T	Tf	C
80	185	122	15	3	106
100	215	154	17	3	136
150	280	209	20	3	188
200	335	264	20	3	243
225	370	296	21	3	275
250	405	328	21	3	307
300	455	376	26	4	354
375	550	463	29	4	439
400	580	489	29	4	439

Drilling Details

Dn	BS10 tab. D			BS10 tab. E			AS4087 class 16		
	No. of Holes	H	PCD	No. of Holes	H	PCD	No. of Holes	H	PCD
80	4	18	146	4	18	146	4	18	146
100	4	18	177.8	8	18	177.8	4	18	178
150	8	18	234.9	8	22	234.9	8	18	235
200	8	18	292.1	8	22	292.1	8	18	292
225	8	18	323.8	12	22	323.8	8	18	324
250	8	22	355.6	12	22	355.6	8	22	356
300	12	22	406.4	12	26	406.4	12	22	406
375	12	26	495.3	12	26	495.3	12	26	495

Note:

BS10 tab. D drilling is generally kept as stock.
If other drilling is required please check availability at time of ordering.

Pipe OD's

Dn	S1 PVC		S2 PVC		Steel	C/DI
	min	max	min	max		
50	60.2	60.5	-	-	60.3	70
65	75.2	75.5	-	-	76.1	-
80	88.7	89.1	-	-	88.9	96 +1/-2
100	114.1	114.5	121.7	122.1	114.3	122 +1/-2
125	140.0	140.4	-	-	139.7	-
150	160.0	160.5	177.1	177.6	165.1 / 168.3	177 +1/-2
175	200.0	200.5	-	-	193.7	-
200	225.0	225.6	231.9	232.6	219.1	232 +1/-2
225	250.0	250.7	258.9	259.6	244.5	259 +1/-2
250	280.0	280.8	285.8	286.6	273.0	286 +1/-2
300	315.0	315.9	344.9	345.8	323.9	345 +1/-2
375	400.0	401.0	425.7	426.7	406.4 (400mm)	426 +1/-2
450	500.0	501.0	-	-	508.0 (500mm)	507 +1/-2

Sluice Valves

All our SUFA/MAXIFLO brand sluice valves are of the resilient seat type - manufactured, individually tested and certified to AS 2638.2-2002.

The body is coated in Rilsan Nylon 11 to AS1458:1994.

Valves are anticlockwise closing.

The seals in the stuffing box can, if required, be replaced while the valve is in service.

Note: this should be done only with the valve in the fully open position.

Valves are available with Double Flanged or Double rubber ring Socket to suit Series 1 PVC or Series 2 PVC/DI pipe.

Flanges are drilled to AS4087:1996 class 16 for D.I

A limited range of Clockwise Closing Valves are available on request.



**Australian
Standard**



Australian
Standard

STANDARDSMARK LICENCE

SAI Global hereby grants to:

Sufa Valves Technology

501 Zhujiang Road, SND,, SUZHOU, JIS China

"the Licensee" the right to use the STANDARDSMARK as shown above only in respect of the goods described and detailed in the Schedule which are produced by the Licensee or on behalf of the Licensee and which comply with the appropriate Standard referred to below as from time to time amended. The Licence is granted subject to the rules governing the use of the STANDARDSMARK and the Terms and Conditions for certification and licence. The Licensee covenants to comply with all the Rules and Terms and Conditions.*

Manufactured to:

AS 2638.2:2002 - Gate valves for waterworks purposes - Resilient seated

** For details of manufacture, refer to the licensee*

The STANDARDSMARK is a registered certification trademark of SAI Global Limited (A.C.N. 050 644 642) and is issued under licence by SAI Global Certification Services Pty Limited (ACN 108 716 669) ("SAI Global"). This certificate remains the property of SAI Global and must be returned to SAI Global upon its request. Refer to the Schedule for the list of product models.

Licence No.: SMK20171
Issue Date: 6 June 2007

Alex Ezrakhovich - General Manager Certification
For and on behalf of SAI Global

Certified Date: 10 December 2004
Expiry Date: 9 December 2009

Authorised Local Signatory, SAI Global



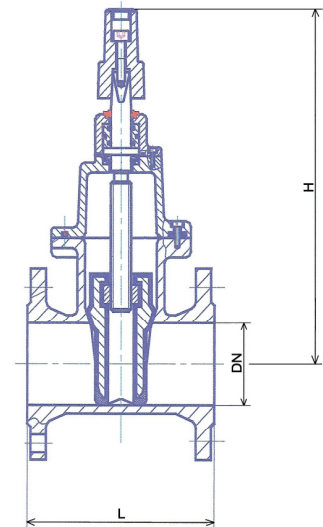
To verify that this certificate is current please refer to the SAI Global StandardsMark website: <http://StandardsMark.com>

Sluice Valves Certified, SUFA/MAXIFLO Brand Double Flanged or Double Socket

Socket profiles are common, with suitable sealing rings fittings to suit
Series 1 PVC or Series 2 PVC/DI pipe respectively.

Double Flanged

Designation	Dn	L	H	Kg/piece	
DISVF050	50	178	308	18.0	
DISVF065	65	190	318	19.0	
DISVF080	80	203	358	20.0	
DISVF100	100	229	386	28.0	
DISVF125	125	254	451	45.0	
DISVF150	150	267	406	50.0	
DISVF200	200	292	634	85.0	
DISVF225	225	305	724	105.0	
DISVF250	250	330	724	125.0	
DISVF300	300	356	834	170.0	
DISVF400	400	406	1103	360.0	



Double Socket Series 1 PVC

Designation	Dn	L	H	Kg/piece	
DISVRRJ100S1	100	340	424	31.0	
DISVRRJ150S1	150	373	569	55.0	
DISVRRJ200S1	200	460	710	94.0	

Double Socket Series 2 PVC/DI

Designation	Dn	L	H	Kg/piece	
DISVRRJ100S2	100	340	424	31.0	
DISVRRJ150S2	150	373	569	55.0	
DISVRRJ200S2	200	460	710	94.0	



**Australian
Standard**

Note:

All sluice valves come with spindle caps as standard.

Hand wheels are available on request.

Larger size Valves are available on request.

The 400mm Sluice Valve come complete with Gear Operator.

The 50mm,65mm and 400mm Sluice Valves are on designed in
accordance to AS 2638.2:2002.

House Connection Service Valves

Our range of Service Valves suit either BSP Threaded or PE fittings with Restrainer Rings.

Suitable for potable water Pressure Rating PN16

Body & Bonnet made from Ductile Iron, Stainless Steel fasteners capped with Sealing compound

Polymeric coated inside & outside, Non-Rising Stainless Steel Stem, Clockwise Closing

Non-Corrosive material for internal Parts, Valve complete with Ductile Iron Handwheel

Tee Type



Designation	Description	
DIHSVTT050050	50x50 BSP Tee Service Valve	
DIHSVPLT063063	63x63 PE Tee Service Valve	



Angle Type



Designation	Description	
DIHSVTA050050	50x50 BSP Angle Service Valve	
DIHSVPLA063063	63 PE x 50 BSP Angle Service Valve	



Fire Hydrants & Risers

All our fire hydrants are of the “screw down” type, manufactured and individually tested to BS750:1984.

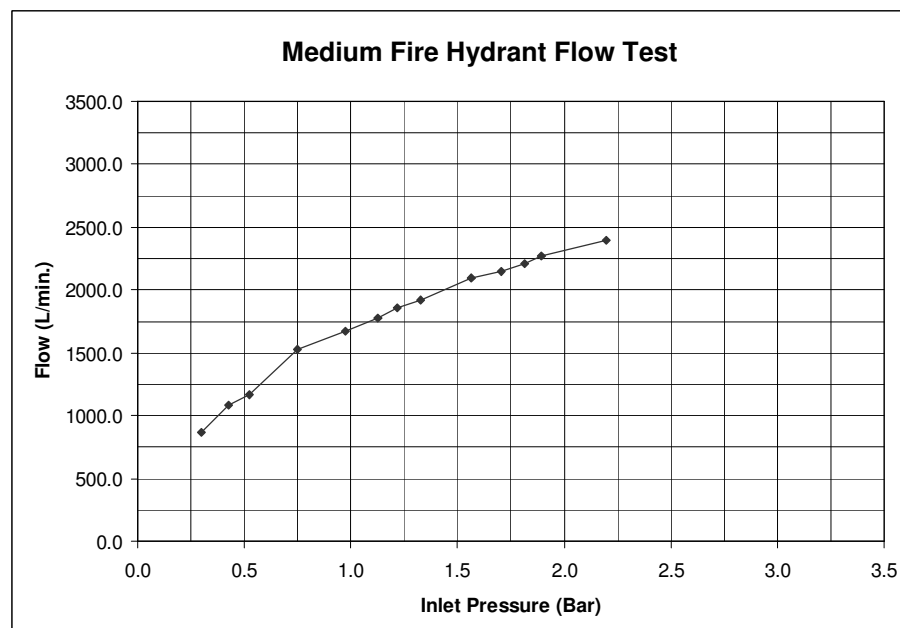
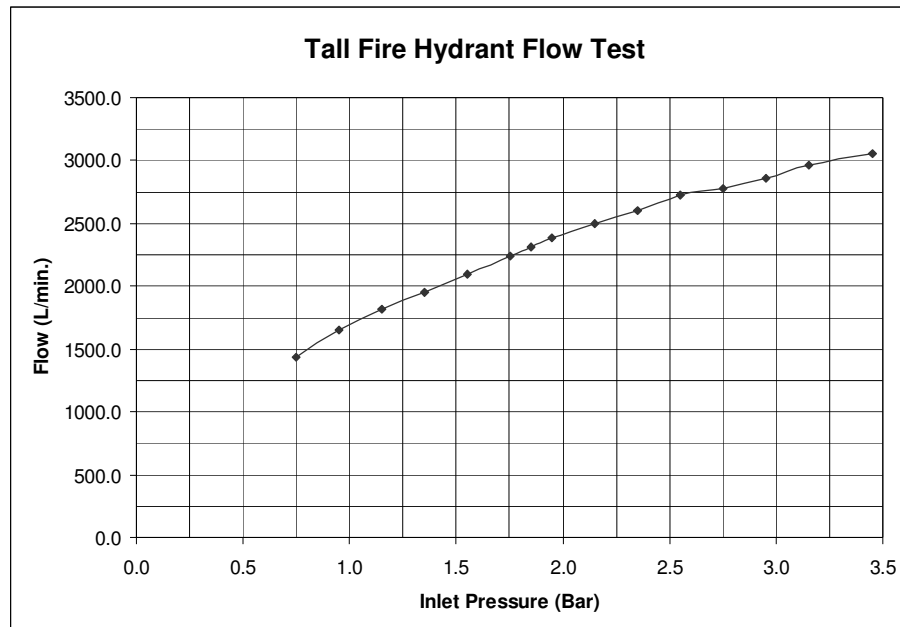
All fasteners and spindle are stainless steel, with the castings being coated with Rilsan Nylon 11 in accordance to AS1458:1994.

As required by the standard, the seals in the stuffing box can be replaced while the hydrant is in service, but only while the hydrant is in the fully closed position.

The bolting flange is drilled (slotted) to suit BS10 table D size 80mm & 3-1/2”.



Fire Hydrant Flow Charts

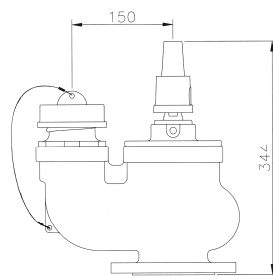


Note:

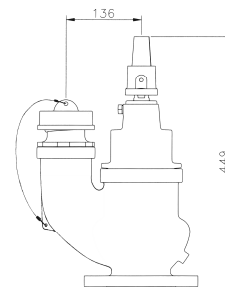
BS750:1984 requires that at an inlet pressure of 1.7 Bar the hydrant must be able to deliver at least 2000 L/min.

As shown in the results above both the tall and medium models exceed this requirement.

Fire Hydrants



Medium Fire Hydrant



Tall Fire Hydrant

Designation	Description	Kg/piece	
DIFHM	Medium Fire Hydrant	24.5	
DIFHT	Tall Fire Hydrant	27.5	

The bolting flange is drilled (slotted) to suit BS10 table D size
80mm & 3 1/2" (hydrant).

Fire Hydrant Seal Kit

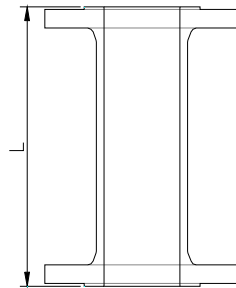
Designation	Description	
DIFHSK	Universal Fire Hydrant Seal Kit	

Fire Hydrant Dressing Sets

Designation	Description	
CIDSHYD/16x65G	Fire Hydrant Dressing Set Galv, M16x65	

Note:
Each seal kit contains all seals required per hydrant.

Hydrant Risers



Designation	L	Kg/piece		
DIHR100	100	9.9		
DIHR150	150	10.8		
DIHR150050	150	9.4		
DIHR225	225	12.3		
DIHR300	300	13.7		
DIHR450	450	16.6		
DIHR600	600	16.6		

The bolting flange is drilled (slotted) to suit BS10 table D size 80mm & 3 1/2" (hydrant).



**Australian
Standard**

Note:
The DIHR150050 unit has a 50mm/2" BSP tapping on the side.

Waterworks Fittings

Our ductile iron waterworks fittings are Certified to AS/NZS 2280.2 2004. Flanges on fittings are generally drilled to AS4087:1996 class 16 for D.I., however other drilling standards are available on request. Fittings can be coated in either bitumen or Rilsan Nylon 11 in accordance to AS1458:1994. For larger fittings we can offer epoxy coating instead of Nylon.



Australian
Standard

Adaptors

Flange Spigot, Flange Series 1 PVC Socket, Flange Series 2 PVC Socket

Bends

11.25°, 22.5°, 45°, 90° Series 1 PVC Socket
11.25°, 22.5°, 45°, 90° Double Flanged

Reducers

Double Spigot, Spigot/Flange, Flange/Spigot, Double Series 1 PVC Socket, Double Flanged

Tees

Spigot Branch Flanged, Series 1 PVC Socket, Series 1 PVC Socket Branch Flanged, All Flanged

Pipe straights

Blank Flanges



Gibaults & Couplers

Series 1 PVC, CI/DI, Stepped, CI/DI to Series 1 PVC, Series 1 PVC Blank End CI/DI Blank End, Posiseal Couplers, Posiflange Adaptors

Tapping Bands

Series 1 PVC, CI/DI

End Caps for Series 1 PVC

Dressing Sets



STANDARDSMARK LICENCE

SAI Global hereby grants:

Asmuss South Island Ltd

67 Vickers Road, Sockburn, Christchurch, New Zealand

StandardsMark Licence

Manufactured to:

AS/NZS 2280:2012 - Ductile iron pipes and fittings

"the StandardsMark Licensee" the right to use the STANDARDSMARK as shown below only in respect of the goods described and detailed in the Schedule which are produced by the Licensee or on behalf of the Licensee* and which comply with the appropriate Standard referred to above as from time to time amended. The Licence is granted subject to the rules governing the use of the STANDARDSMARK and the Terms and Conditions for certification and licence. The Licensee covenants to comply with all the Rules and Terms and Conditions.

Certificate No:SMKP21447

Issued: 20 November 2013
Expires: 11 September 2018

Originally Certified: 12 September 2008
Current Certification: 20 November 2013

Paul Butcher
Global Head – Assurance Services

Samer Chaouk
Head of Policy, Risk and Certification

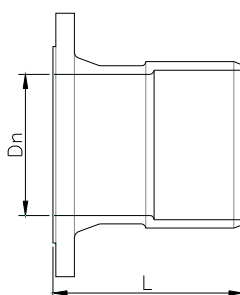


* For details of manufacture, refer to the licensee

The STANDARDSMARK is a registered certification trademark of SAI Global Limited (A.C.N. 050 644 642) and is issued under licence by SAI Global Certification Services Pty Limited (ACN 108 716 669) ("SAI Global") 286 Sussex Street, Sydney NSW 2000, GPO Box 5420 Sydney NSW 2001. This certificate remains the property of SAI Global and must be returned to SAI Global upon its request. Refer to www.saiglobal.com, for the list of product models.



Flange Spigot Adaptors



Designation	Dn	L	Kg/piece		
DIFAC080	80	205	6.1		
DIFAC100	100	205	8.6		
DIFAC150	150	205	14.6		
DIFAC200	200	230	21.8		
DIFAC225	225	230	26.5		
DIFAC250	250	230	31.4		
DIFAC300	300	255	43.5		

Note:

The 225mm unit can be drilled to suit either 225mm or 250mm nominal drilling.

The 375mm unit can be drilled to suit either 375mm or 400mm nominal drilling.

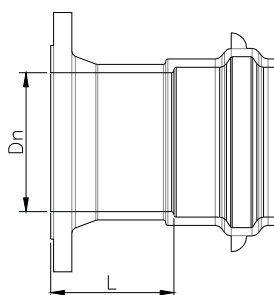
The 225mm unit can be machined to suit 250mm butterfly valves.

Please indicate at time of ordering.



**Australian
Standard**

Flange S1 Socket Adaptors



Designation	Dn	L	Kg/piece		
DIFS080	80	110	6.5		
DIFS100	100	110	9.4		
DIFS125	125	120	12.7		
DIFS150	150	135	17.1		
DIFS175	175	135	23.3		
DIFS200	200	135	25.8		
DIFS225	225	155	32.6		
DIFS250	250	155	39.6		
DIFS300	300	170	51.8		
DIFS375	375	190	82.0		

Note:

The 175mm unit is drilled to suit 200mm nominal drilling.

The 225mm unit can be drilled to suit either 225mm or 250mm nominal drilling.

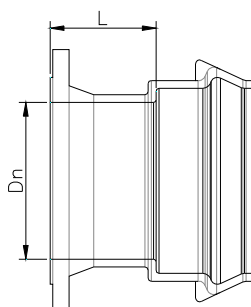
The 375mm unit can be drilled to suit either 375mm or 400mm nominal drilling.

The 175mm, 225mm and 375mm units can be machined to suit 200mm, 250mm and 400mm butterfly valves respectively.

Please indicate at time of ordering.



Flange S2 Socket Adaptors

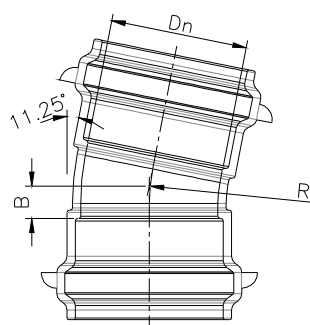


Designation	Dn	L	Kg/piece	
DIFS100S2(N)	100	110	9.4	
DIFS150S2(N)	150	135	17.1	
DIFS200S2(N)	200	135	25.8	
DIFS250S2(N)	250	155	38.9	



**Australian
Standard**

S1 Socket Bends, 11.25°

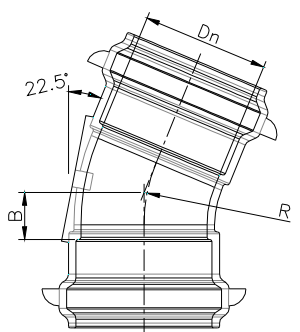


Designation	D_n	B	R	Kg/piece		
DIBRRJ11100	100	30	152	7.2		
DIBRRJ11150	150	35	190	12.6		
DIBRRJ11200	200	35	203	22.0		
DIBRRJ11300	300	50	305	41.9		



Australian
Standard

S1 Socket Bends, 22.5°

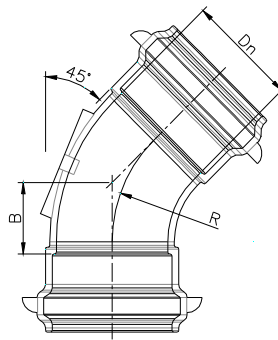


Designation	Dn	B	R	Kg/piece		
DIBRRJ22100	100	45	152	7.9		
DIBRRJ22150	150	55	190	14.2		
DIBRRJ22175	175	55	200	19.0		
DIBRRJ22200	200	55	203	24.1		
DIBRRJ22300	300	80	305	47.0		



**Australian
Standard**

S1 Socket Bends, 45°

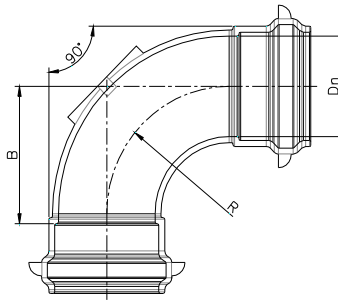


Designation	Dn	B	R	Kg/piece		
DIBRRJ45080	80	80	152	7.3		
DIBRRJ45100	100	80	152	9.3		
DIBRRJ45125	125	90	170	13.3		
DIBRRJ45150	150	95	190	16.8		
DIBRRJ45175	175	100	200	22.3		
DIBRRJ45200	200	100	203	28.6		
DIBRRJ45225	225	115	229	34.4		
DIBRRJ45250	250	125	254	43.5		
DIBRRJ45300	300	145	305	57.3		
DIBRRJ45375	375	185	381	95.3		



**Australian
Standard**

S1 Socket Bends, 90°

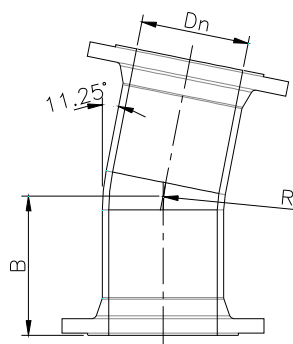


Designation	Dn	B	R	Kg/piece		
DIBRRJ90080	80	165	152	9.2		
DIBRRJ90100	100	165	152	11.7		
DIBRRJ90125	125	185	170	16.0		
DIBRRJ90150	150	205	190	21.9		
DIBRRJ90175	175	215	200	28.5		
DIBRRJ90200	200	220	203	36.8		
DIBRRJ90225	225	250	229	44.9		
DIBRRJ90250	250	275	254	56.5		
DIBRRJ90300	300	325	305	77.8		
DIBRRJ90375	375	405	381	128.9		



**Australian
Standard**

Flanged Bends, 11.25°

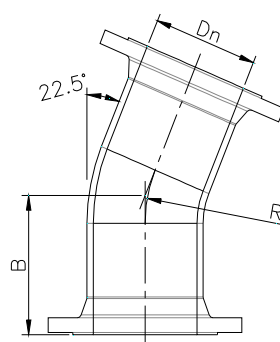


Designation	Dn	B	R	Kg/piece		
DIBF11100	100	152	152	14.6		
DIBF11150	150	190	190	27.6		
DIBF11200	200	203	203	39.7		
DIBF11250	250	254	254	64.1		
DIBF11300	300	305	305	92.4		



**Australian
Standard**

Flanged Bends, 22.5°

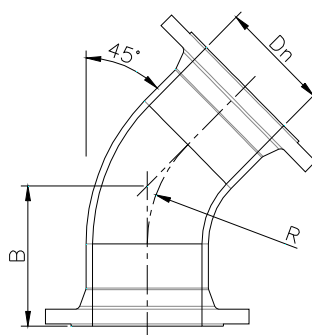


Designation	Dn	B	R	Kg/piece		
DIBF22100	100	152	152	14.6		
DIBF22150	150	190	190	27.6		
DIBF22200	200	203	203	39.6		
DIBF22250	250	254	254	60.0		
DIBF22300	300	305	305	92.3		



**Australian
Standard**

Flanged Bends, 45°

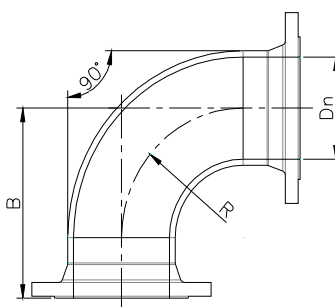


Designation	Dn	B	R	Kg/piece		
DIBF45100	100	152	152	14.5		
DIBF45150	150	190	190	27.3		
DIBF45200	200	203	203	39.2		
DIBF45250	250	254	254	63.4		
DIBF45300	300	305	305	91.3		



**Australian
Standard**

Flanged Bends, 90°



Designation	Dn	B	R	Kg/piece		
DIBF90080	80	241	152	12.3		
DIBF90100	100	241	152	17.0		
DIBF90150	150	279	190	31.0		
DIBF90200	200	305	203	45.7		
DIBF90250	250	356	254	70.2		
DIBF90300	300	406	305	98.4		



**Australian
Standard**

Pipe Straights



Designation	Dn	L	Kg/piece	
DIPDF100500	100	500	18.9	
DIPDF150500	150	500	31.80	

Designation	Dn	L	Kg/piece	
VDIPDF080150	80	150	9.8	
VDIPDF080225	80	225	10.0	
VDIPDF100150	100	150	11.8	
VDIPDF100225	100	225	13.5	
VDIPDF100300	100	300	16.0	
VDIPDF100375	100	375	17.5	
VDIPDF100600	100	600	22.5	

Note:

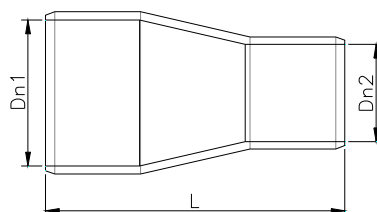
We are also able to offer fabricated pipe straights.
Lengths up to 6m using Steel pipe and any flange configuration, incl puddle flanges, are available .

Coating Options - Rilsan Nylon 11, Galvanised, or epoxy externally.
Please enquire.



**Australian
Standard**

Spigot Reducers

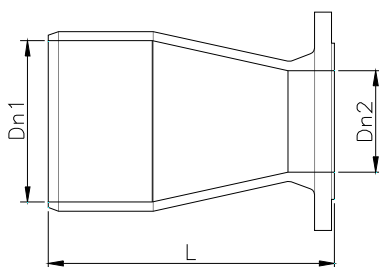


Designation	Dn1	Dn2	L	Kg/piece		
DIRP100080	100	80	268	5.3		
DIRP150100	150	100	331	10.0		
DIRP200150	200	150	343	16.1		



**Australian
Standard**

Spigot Flange Reducers

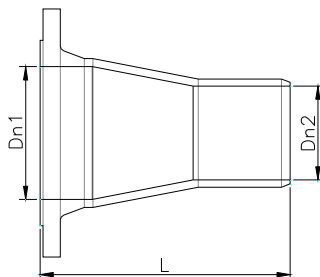


Designation	Dn1	Dn2	L	Kg/piece		
DIRFSE100080	100	80	217	6.9		
DIRFSE150100	150	100	286	12.7		
DIRFSE200150	200	150	305	21.2		



**Australian
Standard**

Flange Spigot Reducers

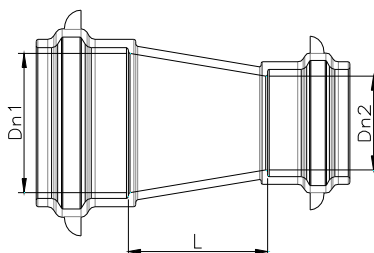


Designation	Dn1	Dn2	L	Kg/piece		
DIRFLE100080	100	80	217	8.2		
DIRFLE150100	150	100	286	15.3		
DIRFLE200150	200	150	305	22.9		



**Australian
Standard**

S1 Socket Reducers

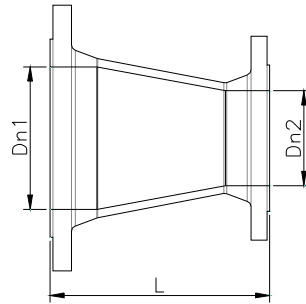


Designation	Dn1	Dn2	L	Kg/piece		
DIRRRJ100080	100	80	105	7.4		
DIRRRJ125100	125	100	110	9.5		
DIRRRJ150100	150	100	170	13.4		
DIRRRJ150125	150	125	150	13.8		
DIRRRJ175150	175	150	170	18.5		
DIRRRJ200100	200	100	295	24.2		
DIRRRJ200150	200	150	170	22.3		
DIRRRJ200175	200	175	150	24		
DIRRRJ225200	225	200	110	26.3		
DIRRRJ250200	250	200	175	33.9		
DIRRRJ250225	250	225	115	32.3		
DIRRRJ300200	300	200	300	47.3		
DIRRRJ300250	300	250	180	44.8		
DIRRRJ375300	375	300	245	69.3		



**Australian
Standard**

Flanged Reducers



Designation	Dn1	Dn2	L	Kg/piece		
DIRF100080	100	80	165	9.8		
DIRF150100	150	100	235	17.8		
DIRF200100	200	100	368	26.7		
DIRF200150	200	150	248	27.2		
DIRF225200	225	200	190	32.2		
DIRF250150	250	150	375	41.8		
DIRF250200	250	200	254	39.9		
DIRF250225	250	225	190	39.8		
DIRF300150	300	150	508	58.1		
DIRF300200	300	200	387	56.4		
DIRF300250	300	250	260	55.6		
DIRF375300	375	300	337	86.8		

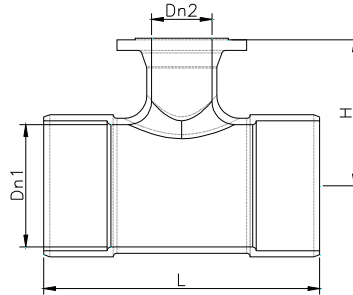
Note:

The 375mm flange can be drilled to suit either 375mm or 400mm nominal drilling.



**Australian
Standard**

Spigot - Branch Flanged Tees



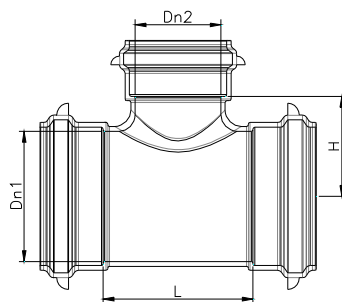
	Designation	Dn1	Dn2	L	H	Kg/piece		
**	DITBF100100	100	100	432	178	15.9		
*	DITBF150080	150	80	432	203	21.5		
**	DITBF150100	150	100	432	203	22.1		
	DITBF150150	150	150	432	203	26.6		
**	DITBF200100	200	100	457	241	31.2		
	DITBF200150	200	150	482	241	36.9		
	DITBF200200	200	200	534	241	43.7		
**	DITBF250100	250	100	457	267	37.5		
	DITBF250150	250	150	534	267	46.8		
**	DITBF300100	300	100	457	305	48.3		
	DITBF300150	300	150	610	305	65.7		

- * Flanges are slotted to suit BS10 table D size 80mm and 3 1/2" Hydrant.
** Flanges are slotted to suit BS10 table D size 100mm and 3 1/2 " Hydrant



**Australian
Standard**

S1 Socket Tees

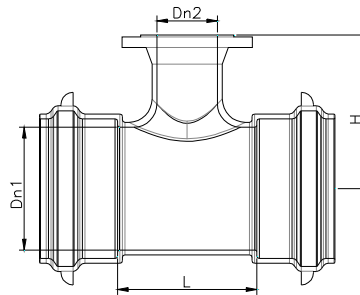


Designation	Dn1	Dn2	L	H	Kg/piece		
DIRRJT080080	80	80	230	115	11.8		
DIRRJT100080	100	80	230	115	14.1		
DIRRJT100100	100	100	230	115	15.0		
DIRRJT125100	125	100	230	115	17.4		
DIRRJT125125	125	125	230	115	18.8		
DIRRJT150100	150	100	230	145	22.5		
DIRRJT150125	150	125	255	145	24.5		
DIRRJT150150	150	150	290	145	27.4		
DIRRJT175100	175	100	230	160	27.9		
DIRRJT175125	175	125	255	160	30.0		
DIRRJT175150	175	150	290	160	33.1		
DIRRJT175175	175	175	310	180	36.9		
DIRRJT200100	200	100	230	170	34.8		
DIRRJT200125	200	125	255	170	37.1		
DIRRJT200150	200	150	290	170	40.5		
DIRRJT200200	200	200	340	170	48.1		
DIRRJT225150	225	150	300	185	46.1		
DIRRJT225225	225	225	380	190	57.8		
DIRRJT250200	250	200	350	200	62.8		
DIRRJT250250	250	250	410	205	72.0		
DIRRJT300300	300	300	490	245	99.9		
DIRRJT375375	375	375	610	305	174		



Australian
Standard

S1 Socket - Branch Flanged Tees



	Designation	Dn1	Dn2	L	H	Kg/piece		
	DIRRJBFT080080	80	80	210	195	13.1		
*	DIRRJBFT100080	100	80	210	195	15.3		
**	DIRRJBFT100100	100	100	230	195	17.8		
*	DIRRJBFT150080	150	80	210	225	20.6		
**	DIRRJBFT150100	150	100	230	225	23.2		
	DIRRJBFT150150	150	150	290	250	30.5		
	DIRRJBFT175150	175	150	290	275	36.2		
**	DIRRJBFT200100	200	100	230	250	31.4		
	DIRRJBFT200150	200	150	290	275	39.5		
	DIRRJBFT200200	200	200	340	275	46.6		
	DIRRJBFT225200	225	200	350	290	51.2		
**	DIRRJBFT250100	250	100	240	280	41.5		
	DIRRJBFT250150	250	150	300	305	50.2		
**	DIRRJBFT300100	300	100	240	310	46.2		
	DIRRJBFT300150	300	150	300	335	55.5		
	DIRRJBFT375300	375	300	500	415	128.6		

- * Flanges are slotted to suit BS10 table D size 80mm and 3 1/2" Hydrant.
- ** Flanges are slotted to suit BS10 table D size 100mm and 3 1/2 " Hydrant

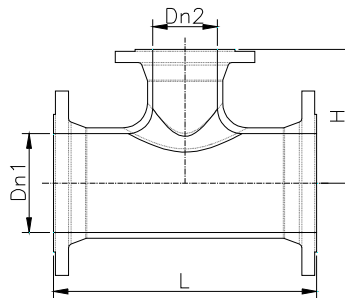
Note:

Other sized S1 Socket - Branch Flanged Tees are available.
Please see the Certified Products section of this catalogue.



**Australian
Standard**

Flanged Tees



	Designation	Dn1	Dn2	L	H	Kg/piece		
	DITF080080	80	80	356	178	15.9		
**	DITF100100	100	100	356	178	22.1		
**	DITF150100	150	100	406	203	34.8		
	DITF150150	150	150	406	203	39.3		
**	DITF200100	200	100	484	241	50.2		
	DITF200150	200	150	484	241	54.6		
	DITF200200	200	200	484	241	58.7		
**	DITF250100	250	100	534	267	72.4		
	DITF250150	250	150	534	267	76.6		
	DITF250250	250	250	534	267	88.5		
**	DITF300100	300	100	610	305	99.0		
	DITF300150	300	150	610	305	103.4		
	DITF300300	300	300	610	305	125.7		
**	DITF375100	375	100	738	356	156.7		
	DITF375200	375	200	738	356	165.8		
	DITF375300	375	300	738	356	193.0		

* Flanges are slotted to suit BS10 table D size 80mm and 3 1/2" Hydrant.

** Flanges are slotted to suit BS10 table D size 100mm and 3 1/2 " Hydrant

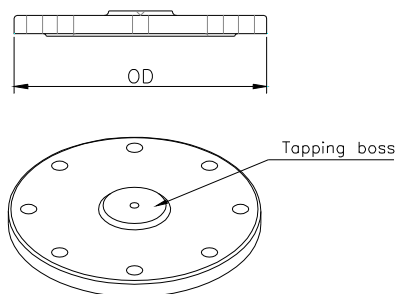


Note:

The 375mm flange can be drilled to suit either 375mm or 400mm nominal

**Australian
Standard**

Blank Flanges



Designation	Dn	OD	Kg/piece		
DIBF080	80	185	3.6		
DIBF080T	80	185	3.6		
DIBF100	100	215	5.2		
DIBF100T	100	215	5.2		
DIBF150	150	280	10.2		
DIBF150T	150	280	10.2		
DIBF200	200	335	14.6		
DIBF200T	200	335	14.6		
DIBF250	250	405	21.9		
DIBF250T	250	405	21.9		
DIBF300	300	455	30.7		
DIBF300T	300	455	30.7		
DIBF400	400				
DIBF400T	400				

Note:

All units are available with or without BSP tapping.

Tapping sizes up to 50mm (2") BSP are available on request.

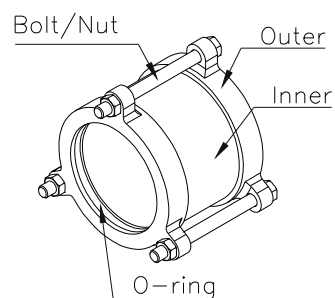
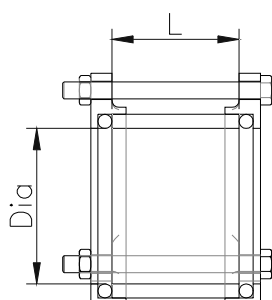
The 100mm unit comes with slotted holes to suit BS10 tab. D & hydrant drilling.

The 250mm, 300mm and 400mm units are offered in Mild Steel.



**Australian
Standard**

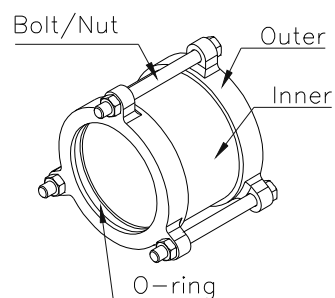
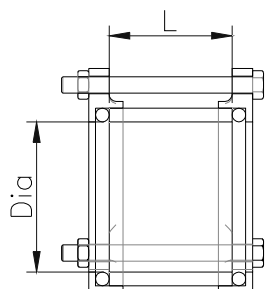
Gibaults, for Series 1 PVC Pipe



Designation	Dn	Dia. (pipe OD)	L	Kg/piece		
CIGP050	50	60	72	3.6		
CIGP065	65	76	72	4.9		
CIGP080	80	89	120	7.5		
CIGP100	100	114	115	11.0		
CIGP125	125	140	115	10.7		
CIGP150	150	160	115	11.6		
CIGP155/150	150	168/160	115	13.5		
CIGP155	155	168	115	12.3		
CIGP175	175	200	105	15.1		
CIGP190	190	219	105	17.8		
CIGP200/190	200	219/225	105	18.1		
CIGP200	200	225	105	18.2		
CIGP225	225	250	150	20.0		
CIGP250	250	281	150	19.5		
CIGPS250	250	281/273	150	22.0		
CIGP300	300	315	150	36.0		
CIGPS300	300	315/324	150	39.0		
CIGP375	375	400	200	64.0		
CIGPS375	375	400/406	200			
CIGP450	450	500	200			
CIGPS450	450	500/508	200			

Larger Gibaults are available on request.

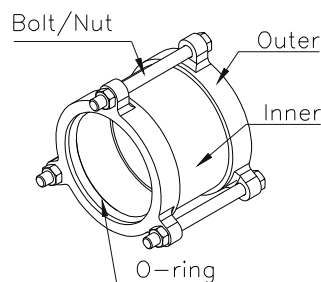
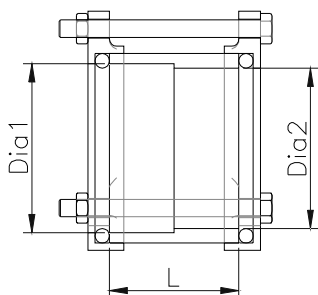
Gibaults, for CI/DI Pipe



Designation	Dn	Dia. (pipe OD)	L	Kg/piece		
CIGC050	50	70	72	3.0		
CIGC080	80	96	120	6.3		
CIGC100	100	122	115	9.4		
CIGC150	150	177	115	12.3		
CIGC200	200	232	115	19.0		
CIGC225	225	259	150	26.0		
CIGC250	250	286	150	29.3		
CIGC300	300	345	150	29.0		
CIGC375	375	426	200	66.1		
CIGC450	450	507	200			

Larger Gibaults are available on request.

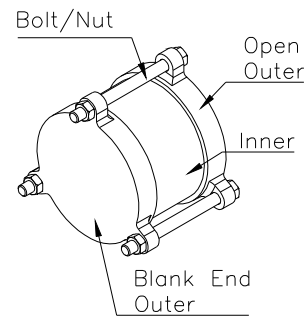
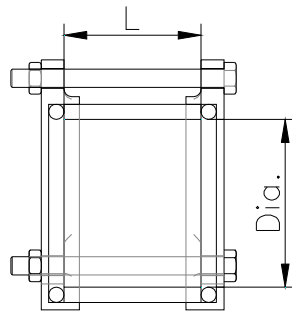
Stepped Gibaults, for CI/DI to Series 1 PVC Pipe



Designation	Dn	Dia.1 (pipe OD)	Dia.2 (pipe OD)	L	Kg/piece		
CIGS050	50	70	60	72	3.2		
CIGS080	80	96	89	120	6.9		
CIGS100	100	122	114	115	10.2		
CIGS150	150	177	160	115	12.4		
CIGS200	200	232	225	105	18.0		
CIGS225	225	259	250	150	17.7		
CIGS250	250	286	281	150	35.0		
CIGS300	300	345	315	150	44.0		
CIGS375	375	426	400	200	65.0		
CIGS450	450	507	500	200			

Larger Gibaults are available on request.

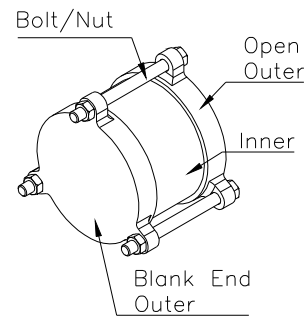
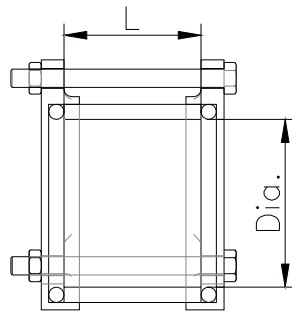
Blank End Gibaults, for Series 1 PVC Pipe



Designation	Dn	Dia. (pipe OD)	L	Kg/piece		
CIGP080BC	80	89	120	8.8		
CIGP100BC	100	114	115	13		
CIGP125BC	125	140	115	13.6		
CIGC150BC	150	160	115	15.4		
CIGP155BC	150	168	115	16.4		
CIGP175BC	175	200	105	21.1		
CIGP190BC	200	219	105	24.9		
CIGP200BC	200	225	105	25.6		
CIGP225BC	225	250	150	-		
CIGP250BC	250	281	150	-		
CIGP300BC	300	315	150	-		

Larger Gibaults are available on request.

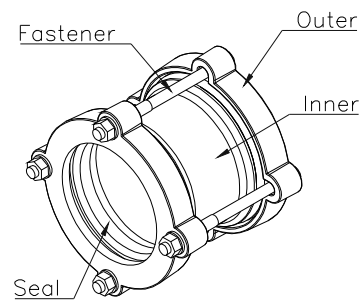
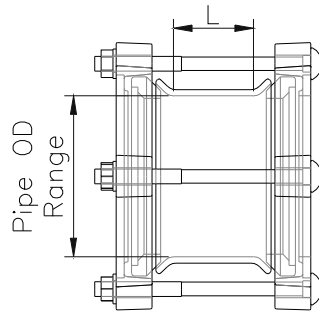
Blank End Gibaults, for CI/DI Pipe



Designation	Dn	Dia. (pipe OD)	L	Kg/piece		
CIGC100BC	100	122	115	11.6		
CIGC150BC	150	177	115	16.9		
CIGC200BC	200	232	105	20.0		
CIGC250BC	250	286	150	39.3		
CIGC300BC	300	345	150	43.0		

Larger Gibaults are available on request.

Posiseal Couplers

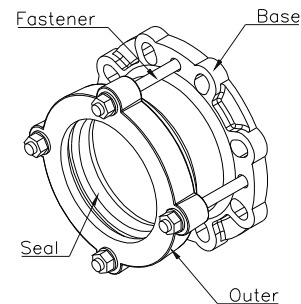
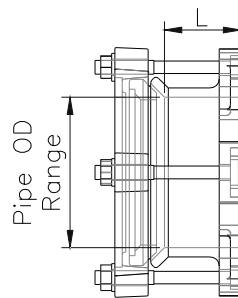


Designation	Dn	Pipe OD Range	L	Kg/piece	
DIPSC050(N)	50	59-72	95	3.3	
DIPSC080(N)	80	88-103	95	3.0	
DIPSC100(N)	100	109-128	95	4.5	
DIPSC125(N)	125	132-146	100	6.2	
DIPSC150(N)	150	159-182	105	6.5	
DIPSC175(N)	175	192-210	130	8.8	
DIPSC200(N)	200	218-235	130	9.7	
DIPSC225(N)	225	250-267	130	17.2	
DIPSC250(N)	250	272-289	130	17.3	
DIPSC300S(N)	300	315-332	130	22.5	
DIPSC300L(N)	300	332-349	130	23.7	
DIPSC375(N)	375	400-426	165	60.0	

Note:

All Posicouplers are sold coated in Rilsan Nylon 11 with S/S316 fasteners and EPDM rubber seals.
Galv fasteners are available on request.

Posiflange Adaptors



Designation	Dn	Pipe OD Range	L	Kg/piece	
DIPSFC080(N)	80	88-103	75	4.9	
DIPSFC100(N)	100	109-128	75	4.9	
DIPSFC150(N)	150	159-182	75	7.8	
DIPSFC200(N)	200	218-235	70	13.0	
DIPSFC250(N)	250	272-289	82	14.5	
DIPSFC300S(N)	300	315-332	82	19.0	
DIPSFC300L(N)	300	332-349	92	23.0	

Note:

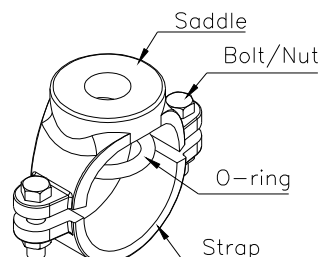
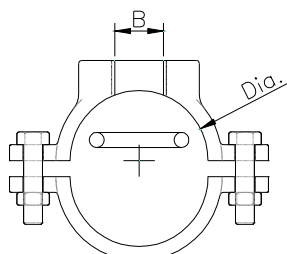
All flanges are drilled to suit BS10 tab. D&E with the exception of the 250mm unit.

The 250mm unit is drilled to suit BS10 tab. E only.

All Posiflange Adaptors are sold coated in Rilsan Nylon 11 with S/S316 fasteners and EPDM seals.

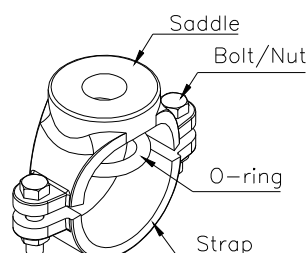
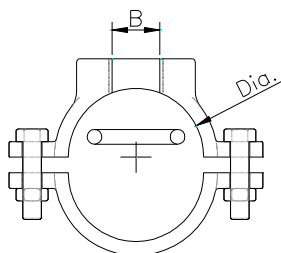
Galv fasteners are available on request.

Tapping Bands, for Series 1 PVC Pipe



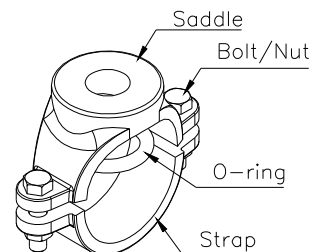
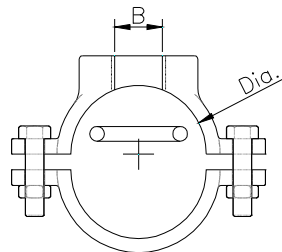
Designation	Dn	Dia. (pipe OD)	B (BSP thread)	Kg/piece		
CITBP050020	50	60	20	1.3		
CITBP050025	50	60	25	1.3		
CITBP050032	50	60	32	1.3		
CITBP050040	50	60	40	1.3		
CITBP065015	65	76	15	1.1		
CITBP065020	65	76	20	1.1		
CITBP065025	65	76	25	1.1		
CITBP065032	65	76	32	1.1		
CITBP065040	65	76	40	1.1		
CITBP080015	80	89	15	2.5		
CITBP080020	80	89	20	2.5		
CITBP080025	80	89	25	2.5		
CITBP080032	80	89	32	2.5		
CITBP080040	80	89	40	2.5		
CITBP080050	80	89	50	2.5		
CITBP100015	100	114	15	3.3		
CITBP100020	100	114	20	3.3		
CITBP100025	100	114	25	3.3		
CITBP100032	100	114	32	3.3		
CITBP100040	100	114	40	3.3		
CITBP100050	100	114	50	3.3		
CITBP125015	125	140	15	3.6		
CITBP125020	125	140	20	3.6		
CITBP125025	125	140	25	3.6		
CITBP125032	125	140	32	3.6		
CITBP125040	125	140	40	3.6		
CITBP125050	125	140	50	3.6		
CITBP150015	150	160	15	3.7		
CITBP150020	150	160	20	3.7		
CITBP150025	150	160	25	3.7		
CITBP150032	150	160	32	3.7		
CITBP150040	150	160	40	3.7		
CITBP150050	150	160	50	3.7		

Tapping Bands, for Series 1 PVC Pipe, cont.



Designation	Dn	Dia. (pipe OD)	B (BSP thread)	Kg/piece		
CITPB155015	155	168	15	4.0		
CITBP155020	155	168	20	4.0		
CITBP155025	155	168	25	4.0		
CITBP155032	155	168	32	4.0		
CITBP155040	155	168	40	4.0		
CITBP155050	155	168	50	4.0		
CITBP175015	175	200	15	4.8		
CITBP175020	175	200	20	4.8		
CITBP175025	175	200	25	4.8		
CITBP175032	175	200	32	4.8		
CITBP175040	175	200	40	4.8		
CITBP175050	175	200	50	4.8		
CITBP190015	190	219	15	5.0		
CITBP190020	190	219	20	5.0		
CITBP190025	190	219	25	5.0		
CITBP190032	190	219	32	5.0		
CITBP190040	190	219	40	5.0		
CITBP190050	190	219	50	5.0		
CITBP200015	200	225	15	5.1		
CITBP200020	200	225	20	5.1		
CITBP200025	200	225	25	5.1		
CITBP200032	200	225	32	5.1		
CITBP200040	200	225	40	5.1		
CITBP200050	200	225	50	5.1		
CITBP225015	225	250	15	7.5		
CITBP225020	225	250	20	7.5		
CITBP225025	225	250	25	7.5		
CITBP225032	225	250	32	7.5		
CITBP225040	225	250	40	7.5		
CITBP225050	225	250	50	7.5		

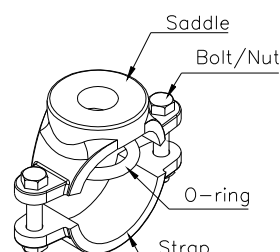
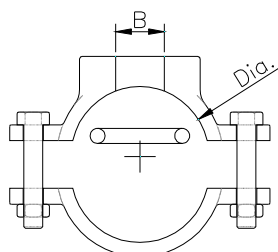
Tapping Bands, for Series 1 PVC Pipe, cont.



Designation	Dn	Dia. (pipe OD)	B (BSP thread)	Kg/piece		
CITBP250020	250	281	20			
CITBP250025	250	281	25			
CITBP250032	250	281	32			
CITBP250040	250	281	40			
CITBP250050	250	281	50			
CITBP300020	300	315	20			
CITBP300025	300	315	25			
CITBP300032	300	315	32			
CITBP300040	300	315	40			
CITBP300050	300	315	50			
CITBP375050	375	400	50			
CITBP450050	450	500	50			

Note:
The 250mm & 300mm units are offered made from LG2 Gunmetal.
The 375mm & 450mm unit is offered fabricated and nylon coated.
(not as pictured)

Tapping Bands, for CI/DI Pipe

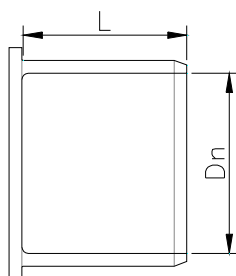


Designation	Dn	Dia. (pipe OD)	B (BSP thread)	Kg/piece		
CITBA080020	80	96	20	4.4		
CITBA080025	80	96	25	4.4		
CITBA080032	80	96	32	4.4		
CITBA080040	80	96	40	4.4		
CITBA100020	100	122	20	4.0		
CITBA100025	100	122	25	3.7		
CITBA100032	100	122	32	3.6		
CITBA100040	100	122	40	3.6		
CITBA100050	100	122	50	3.6		
CITBA150020	150	177	20	5.5		
CITBA150025	150	177	25	5.5		
CITBA150032	150	177	32	5.5		
CITBA150040	150	177	40	5.5		
CITBA150050	150	177	50	5.5		
CITBA200020	200	232	20	7.2		
CITBA200025	200	232	25	6.8		
CITBA200032	200	232	32	6.7		
CITBA200040	200	232	40	6.7		
CITBA200050	200	232	50	6.3		
CITBA250020	250	286	20			
CITBA250025	250	286	25			
CITBA250032	250	286	32			
CITBA250040	250	286	40			
CITBA250050	250	286	50			
CITBA300020	300	345	20			
CITBA300025	300	345	25			
CITBA300032	300	345	32			
CITBA300040	300	345	40			
CITBA300050	300	345	50			

Note:

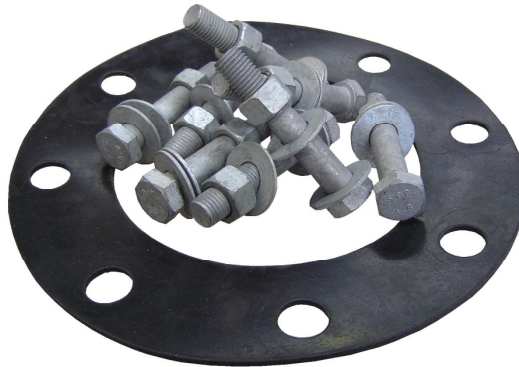
The 250mm & 300mm units offered made from LG2 Gunmetal (not as pictured).

End Caps, for Series 1 PVC Pipe



Designation	Dn	L	Kg/piece	
CIEC100L	100	100	3.6	
CIEC125L	125	110	5.4	
CIEC150L	150	130	7.7	
CIEC175L	175	140	10.7	
CIEC200L	200	140	14.3	
CIEC225L	225	148	17	

Dressing Sets



BS10 Table D

Designation	Dn	
CIDS050TD/16x65G	50	
CIDS065TD/16x65G	65	
CIDS080TD/16x65G	80	
CIDS100TD/16x75G	100	
CIDS100TD/16x90G	100	
CIDS125TD/16x75G	125	
CIDS150TD/16x75G	150	
CIDS150TD/16x90G	150	
CIDS200TD/16x90G	200	
CIDS200TD/16x110G	200	
CIDS225TD/16x90G	225	
CIDS250TD/20x90G	250	
CIDS300TD/20x90G	300	
CIDS375TD/24x110G	375	
CIDS400TD/24x110G	400	
CIDSHYD/16x65G	Hydrant	

BS10 Table E

Designation	Dn	
CIDS050TE/16x65G	50	
CIDS065TE/16x65G	65	
CIDS080TE/16x65G	80	
CIDS100TE/16x75G	100	
CIDS100TE/16x90G	100	
CIDS125TE/16x75G	125	
CIDS150TE/20x75G	150	
CIDS150TE/20x90G	150	
CIDS200TE/20x90G	200	
CIDS200TE/20x110G	200	
CIDS225TE/20x90G	225	
CIDS250TE/20x90G	250	
CIDS300TE/24x90G	300	
CIDS375TE/24x110G	375	
CIDS400TE/24x110G	400	

Note:

All standard dressing sets are sold with galv fasteners and 3mm insertion rubber gaskets.
Other fastener options (incl stainless steel) are available.
Larger size sets are also available on request. Please enquire.

Irrigation Fittings

Our new Irrigation assembly has done away with the threaded riser, a costly and time consuming process. This allows for easier assembly/disassembly.

The cap is compatible with Read irrigation systems, allowing for the use of existing hose couplings.

All fasteners are either stainless steel or gunmetal for corrosion resistance.

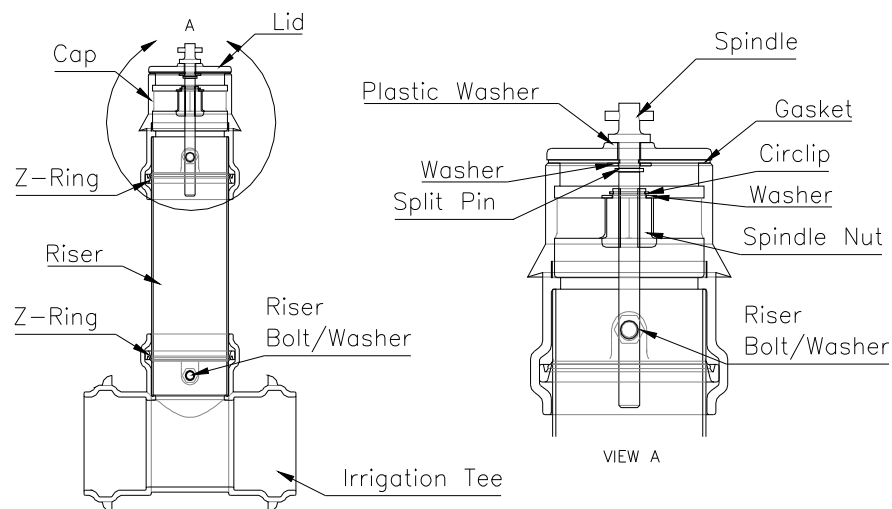
The units are sold preassembled and works pressure tested to 12 Bar, ready to be installed into the ground.

Branch heights are generally standardized, however, any height is available on request.

If any further fittings are required to complete the irrigation line, eg tees, bends, gibaults, please refer to the Waterworks Fittings section in this catalogue.



Irrigation Assembly Details

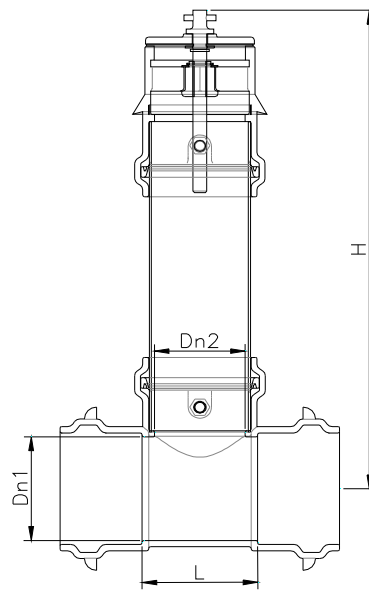


Part Description	Qty per Assembly	Material
Irrigation Tee	1	D.I.
Z-Ring	2	Rubber
Riser	1	Galv. Steel
Cap	1	D.I.
Riser Bolt	4	S/S 304
Riser Washer	4	Plastic
Spindle Nut	1	Gunmetal
Nut Washer	1	S/S 304
Nut Circlip	1	S/S 304
Split Pin	1	S/S 304
Spindle Washer	1	S/S 304
Gasket	1	Rubber
Lid	1	D.I.
Plastic Washer	1	Plastic

Note:

Individual components are available for repairs & maintenance if required. Please enquire.

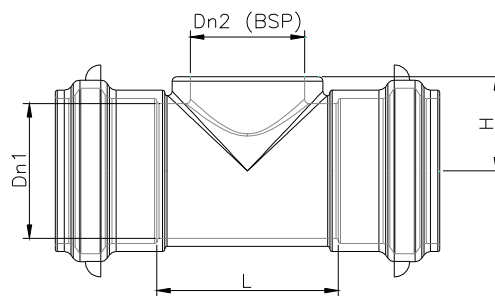
Irrigation Tee Assemblies



Designation	Dn1	Dn2	L	H	Kg/piece	
DIITA100100	100	100	230	685	27.1	
DIITA125100	125	100	235	690	30.1	
DIITA125125	125	125	235	690	34.1	
DIITA150100	150	100	230	715	34.6	
DIITA150125	150	125	255	715	39.5	
DIITA175100	175	100	230	730	39.9	
DIITA175125	175	125	255	730	45.0	

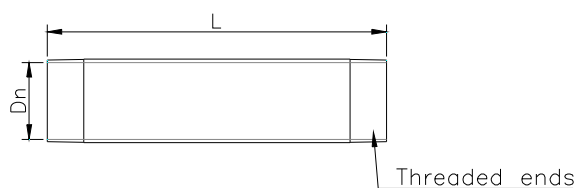
Note:
Other riser heights are available on request. Please enquire.

S1 Socket - BSP Branch Tees



Designation	Dn1	Dn2	L	H	Kg/piece		
DIIT100100	100	100	174	85	13.1		
DIIT125100	125	100	174	95	15.0		
DIIT125125	125	125	200	95	16.4		
DIIT150100	150	100	178	105	18.2		
DIIT150125	150	125	202	105	19.6		
DIIT175100	175	100	180	120	23.6		
DIIT175125	175	125	206	120	27.7		
DIIT200100	200	100	182	130	29.9		
DIIT200125	200	125	206	130	33.5		
DIIT200150	200	150	250	140	38.5		
DIIT225100	225	100	250	165	46.5		
DIIT225125	225	125	250	165	46.5		
DIIT225150	225	150	250	165	46.5		
DIIT250100	250	100	250	180	58.5		
DIIT250125	250	125	250	180	58.5		
DIIT250150	250	150	250	180	58.5		
DIIT300100	300	100	250	200	71.5		
DIIT300125	300	125	250	200	71.5		
DIIT300150	300	150	250	200	71.5		

Galv. BSP Risers



Designation	Dn	L	
CIHRBSP080	80	465	
CIHRBSP100	100	465	
CIHRBSP125	125	465	
CIHRBSP150	150	465	

Note:
Other lengths available on request. Please enquire.

Dual Seal Products

All Dual Seal products comply to the latest Australian Standard
AS2280 - Ductile Iron Pressure Pipes & Fittings.

All fittings can be supplied either Rilsan Nylon 11 coated in accordance to
AS1458:1994 or Bitumen coated as required.

Socket profiles are common, with suitable sealing rings fitted to suit series 1
or series 2 PVC respectively.

Flanges are generally drilled to AS4087 class 16, however, any drilling
standard is available on request.

Please note that although we are able to supply all fittings described in this
section they may not be available ex stock. Please check availability at time
of ordering.



**Australian
Standard**

Flange Socket Adaptors

For Series 1 PVC Pipe

Designation	Dn	L	Kg/piece	
VDIFS100S1	100	110	11.0	
VDIFS150S1	150	135	14.8	

For Series 2 PVC Pipe

Designation	Dn	L	Kg/piece	
VDIFS100S2	100	110	11.0	
VDIFS150S2	150	135	14.8	



**Australian
Standard**

Socket Bends

For Series 1 PVC Pipe

Designation	Dn	Angle	Kg/piece	
VDIBRRJ11100S1	100	11.25°	12.0	
VDIBRRJ22100S1	100	22.5°	13.0	
VDIBRRJ45100S1	100	45°	14.0	
VDIBRRJ90100S1	100	90°	17.0	
VDIBRRJ11150S1	150	11.25°	19.1	
VDIBRRJ22150S1	150	22.5°	20.6	
VDIBRRJ45150S1	150	45°	23.6	
VDIBRRJ90150S1	150	90°	28.1	
VDIBRRJ11200S1	200	11.25°	31.9	
VDIBRRJ22200S1	200	22.5°	33.4	
VDIBRRJ45200S1	200	45°	37.4	
VDIBRRJ90200S1	200	90°	44.9	

For Series 2 PVC Pipe

Designation	Dn	Angle	Kg/piece	
VDIBRRJ11100S2	100	11.25°	12.0	
VDIBRRJ22100S2	100	22.5°	13.0	
VDIBRRJ45100S2	100	45°	14.0	
VDIBRRJ90100S2	100	90°	17.0	
VDIBRRJ11150S2	150	11.25°	19.1	
VDIBRRJ22150S2	150	22.5°	20.6	
VDIBRRJ45150S2	150	45°	23.6	
VDIBRRJ90150S2	150	90°	28.1	
VDIBRRJ11200S2	200	11.25°	31.9	
VDIBRRJ22200S2	200	22.5°	33.4	
VDIBRRJ45200S2	200	45°	37.4	
VDIBRRJ90200S2	200	90°	44.9	



**Australian
Standard**

Socket Reducers

For Series 1 PVC Pipe

Designation	Dn1	Dn2	L	Kg/piece	
VDIRRRJ150100S1	150	100	170	19.4	
VDIRRRJ200100S1	200	100	295	31.7	
VDIRRRJ200150S1	200	150	170	33.5	

For Series 2 PVC Pipe

Designation	Dn1	Dn2	L	Kg/piece	
VDIRRRJ150100S2	150	100	170	19.4	
VDIRRRJ200100S2	200	100	295	31.7	
VDIRRRJ200150S2	200	150	170	33.5	



Australian
Standard

Socket Tees

For Series 1 PVC Pipe

Designation	Dn1	Dn2	L	H	Kg/piece	
VDIRRJ100100S1	100	100	230	115	24.0	
VDIRRJ150100S1	150	100	230	145	32.7	
VDIRRJ150150S1	150	150	290	145	39.4	
VDIRRJ200100S1	200	100	230	170	46.9	
VDIRRJ200150S1	200	150	290	170	52.2	
VDIRRJ200200S1	200	200	340	170	61.0	

For Series 2 PVC Pipe

Designation	Dn1	Dn2	L	H	Kg/piece	
VDIRRJ100100S2	100	100	230	115	24.0	
VDIRRJ150100S2	150	100	230	145	32.7	
VDIRRJ150150S2	150	150	290	145	39.4	
VDIRRJ200100S2	200	100	230	170	46.9	
VDIRRJ200150S2	200	150	290	170	52.2	
VDIRRJ200200S2	200	200	340	170	61.0	



**Australian
Standard**

Socket - Branch Flanged Tees

For Series 1 PVC Pipe

Designation	Dn1	Dn2	L	H	Kg/piece	
VDIRRBFT100080S1	100	80	210	195	22.0	
VDIRRBFT100100S1	100	100	230	195	24.5	
VDIRRBFT150080S1	150	80	210	225	31.2	
VDIRRBFT150100S1	150	100	230	225	32.2	
VDIRRBFT150150S1	150	150	290	250	44.6	
VDIRRBFT200080S1	200	80	210	250	44.8	
VDIRRBFT200100S1	200	100	230	250	44.4	
VDIRRBFT200150S1	200	150	290	275	54.0	
VDIRRBFT200200S1	200	200	340	275	68.4	

For Series 2 PVC Pipe

Designation	Dn1	Dn2	L	H	Kg/piece	
VDIRRBFT100080S2	100	80	210	195	22.0	
VDIRRBFT100100S2	100	100	230	195	24.5	
VDIRRBFT150080S2	150	80	210	225	31.2	
VDIRRBFT150100S2	150	100	230	225	32.2	
VDIRRBFT150150S2	150	150	290	250	44.6	
VDIRRBFT200080S2	200	80	210	250	44.8	
VDIRRBFT200100S2	200	100	230	250	44.4	
VDIRRBFT200150S2	200	150	290	275	54.0	
VDIRRBFT200200S2	200	200	340	275	68.4	



**Australian
Standard**

Notes:

Notes: