

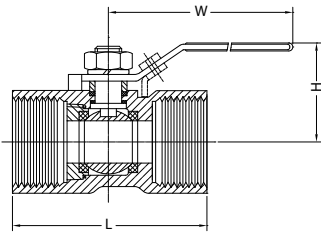


# Section 23

# Fire Protection Valves

## Bonomi Fire Hydrant Landing Valve F/F ends

AON Listed No. VAL-31. Brass Full Bore Ball valve with Lockable Lever Handle. Fire Hydrant Riser & Outlet Valve

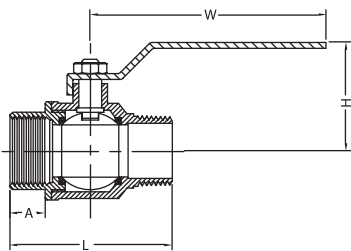


SPECIFICATIONS	
Thread	BSPP
MAX Working Temperature	90 C
Cold Working Pressure	25 Bar

Asmuss Fire Hydrant Landing Valve					
CODE	SIZE	L	H	W	APPROX KG
BVFH/065	65	134	99	170	3.2

## Maxiflo Fire Hydrant Landing Valve M/F Ends

Brass Full Bore Ball valve with Lockable Lever Handle. Fire Hydrant Riser & Outlet Valve. Ins. Council Listed No. 462



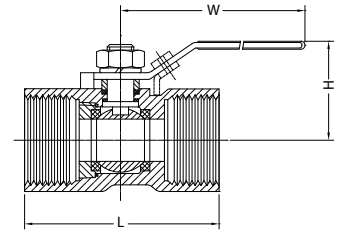
SPECIFICATIONS	
Thread	BSPP
Max Working Temperature	90°C
Cold Working Pressure	25 Bar

Maxiflo Fire Hydrant Landing Valve					
CODE	SIZE	L	H	W	APPROX KG
MVFH/065	65	150	107	230	4.1

## Bonomi Lockable Brass Ball Valve

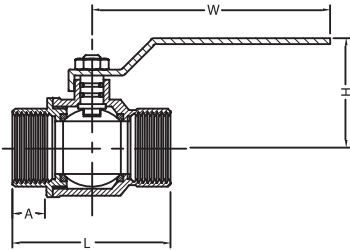
MATERIALS	
PART	MATERIAL
Body	Brass (Nickel Plated)
Seat Retainer	Brass (Nickel Plated)
Seat	P.T.F.E.
Ball	Brass (Chromium plated)
Stem	Brass
Gland	Brass
Packing	Nitrile O ring
Lever	Steel Zinc Plated (Plastic Coated)
Lever Retaining Nut	Steel Zinc Plated

SPECIFICATIONS	
Thread	BSPt
MAX Working Temperature	130°C
Cold Working Pressure	PN16 to PN80 acc. to size



Bonomi Topic Ball Valve F/F Ends Lockable Lever Handle					
CODE	SIZE	L	H	W	APPROX KG
LEVER				LEVER	
BVTLH/015	15	59.5	41	90	0.206
BVTLH/020	20	70	49.5	105	0.35
BVTLH/025	25	83	53.5	105	0.513
BVTLH/032	32	98.5	66	140	0.94
BVTLH/040	40	108	72	140	1.371
BVTLH/050	50	130	86	170	2.347

## Maxiflo Lockable Brass Ball Valve



MATERIALS	
PART	MATERIAL
Body	Brass (Nickel Plated)
Seat Retainer	Brass (Nickel Plated)
Seat	P.T.F.E.
Ball	Brass (Chromium plated)
Stem	Brass
Gland	Brass
Packing	Viton (Double O-Ring)
Lever	Stainless Steel (Plastic Coated)
Lever Retaining Nut	Brass (Nickel Plated)

SPECIFICATIONS	
Thread	AS1722.1 / ISO 7 (BSPT)
MAX Working Temperature	150°C
Cold Working Pressure	25 Bar

Maxiflo Lockable Brass Ball Valve					
CODE	SIZE	L	H	W	APPROX KG
<b>LOCKABLE LEVER</b>					
MVGASLH/015	15	60	39	95	0.2
MVGASLH/020	20	66.5	43	115	0.3
MVGASLH/025	25	76	59.5	115	0.43
MVGASLH/032	32	92.8	63	125	0.74
MVGASLH/040	40	100.5	77	180	1.12
MVGASLH/050	50	122	89	180	1.72

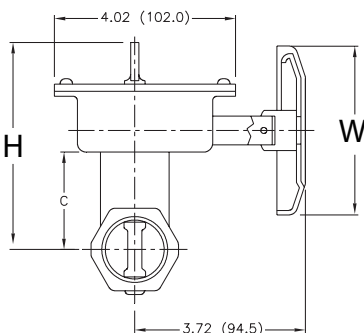
## Monitored Butterfly Valve Bronze Body Screwed Ends

Factory Installed Double Tamper Switch. UL Listed FM Approved



SPECIFICATIONS	
Thread	BSPP
MAX Working Temperature	120°C
Cold Working Pressure	12.5 Bar

Maxiflo Lockable Brass Ball Valve					
CODE	SIZE	FACE TO FACE	H	W	APPROX KG
SVBV/050BSP	50	83	108	95	2.2



## Monitored Butterfly Valve DI Body Grooved Ends – ‘Indoor Use’

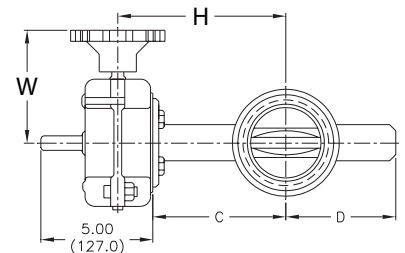
Factory Installed Double Tamper Switch – Indoor use. UL Listed FM Approved

SPECIFICATIONS	
Ends	Grooved
MAX Working Temperature	120°C
Cold Working Pressure	12 Bar



### Globe Monitored Butterfly Valve DI Body Grooved Ends – ‘Indoor use’ Switch set for valve “Normally Open”

CODE	SIZE	FACE TO FACE	H	W	APPROX KG
SVBV/065	65	96.4	262	128	8.8
SVBV/080	80	96.4	269	128	9.2
SVBV/100	100	115.4	302	128	10.6
SVBV/150	150	132.4	336	220	17.8
SVBV/200	200	147.4	361	220	23.7



### Globe Monitored Butterfly Valve DI Body Grooved Ends – ‘Indoor use’ Switch set for valve “Normally Closed”

CODE	SIZE	FACE TO FACE	H	W	APPROX KG
SVBVNC/080	80	96.4	269	128	9.2
SVBVNC/100	100	115.4	302	128	10.6
SVBVNC/150	150	132.4	336	220	17.8

## Monitored Butterfly Valve DI Body Grooved Ends – ‘Outdoor Use’

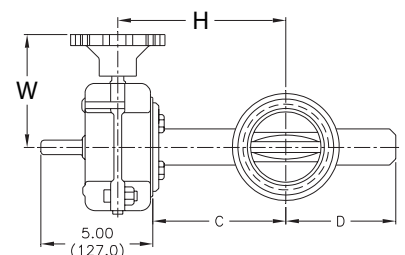
Factory Installed Double Tamper Switch – Outdoor use. UL Listed FM Approved

SPECIFICATIONS	
Ends	Grooved
MAX Working Temperature	120°C
Cold Working Pressure	21.4 Bar



### Globe Monitored Butterfly Valve DI Body Grooved Ends – ‘Outdoor use’

CODE	SIZE	FACE TO FACE	H	W	APPROX KG
SVBO/065	65	96.4	262	128	8.8
SVBO/080	80	96.4	269	128	9.2
SVBO/100	100	115.4	302	128	10.6
SVBO/150	150	132.4	336	220	17.8
SVBO/200	200	147.4	361	220	23.7



## Shurjoint Check Valves Grooved Ends

Dual Plate Type, DI Body with Bronze Plates, EPDM seat. UL Listed FM Approved.



### SPECIFICATIONS TYPE 453

Ends	Grooved
MAX Working Temperature	70°C
Cold Working Pressure	21.4 Bar

### Shurjoint Check Valves Grooved Ends

CODE	SIZE	FACE TO FACE	H	APPROX KG
SCV/080	80	130.3	139.7	4
SCV/100	100	143	160.3	5.6
SCV/150	150	177.8	235	12.6
SCV/200	200	209.5	285.7	22

## Globe Alarm Check Valve

UL Listed FM Approved, H1 Flanged Ends, H2 Grooved Ends.



### SPECIFICATIONS

Ends	Grooved
MAX Working Temperature	70°C
MAX Cold Working Pressure	12 Bar

### Globe Alarm Check Valve H1 Flanged Ends Globe Alarm Check Valve H2 Grooved Ends

CODE GROOVED	CODE FLANGED	SIZE	FACE TO FACE GROOVED	FACE TO FACE FLANGED	APPROX KG FLGD
GLACVG/080	GLACVF/080	80	254	228.6	15.5
GLACVG/100	GLACVF/100	100	254	228.6	19.1
	GLACVF/150	150		254	31.4

## Single Water Motor Alarm Gong Globe type WM

Cast Aluminium Body with Lightweight Impeller & Polymer Drive bearings. High Decibel Sound Levels. Complete with installation pipe & fittings. UL Listed FM Approved.



### SPECIFICATIONS

Sound Level up to	105 dba
MAX Working Temperature	70°C
MAX Working Pressure	12 Bar

### Single Water Motor Alarm Gong Globe type WM

CODE	SIZE	L	H	APPROX KG
GLSWAG	20	220	220	2



## Monitored Gate Valve with Amtron Anti-Tamper Switch

CI body brass trim ends flanged AS2129 T/E.

### SPECIFICATIONS

MAX Working Temperature	150°C
MAX Cold Working Pressure	16 Bar



### Monitored Gate Valve with Amtron Anti-Tamper Switch

CODE	SIZE	FACE TO FACE	H	W	APPROX KG
MVCIGRS/100	100	229	535	200	35
MVCIGRS/150	150	267	739	280	63
MVCIGRS/200	200	292	936	300	92
MVCIGRS/250	250	330	1133	360	149
MVCIGRS/300	300	356	1330	400	198

## Ever Grooved End Gate Valve OS&Y Rubber Coated Wedge

DI body, brass trim, ends grooved. UL/FM approved. Can be fitted with Potter indoor anti-tamper switch or Amtron outdoor anti-tamper switch.

### SPECIFICATIONS

Design to	AWWA C509
MAX Working Temperature	90°C
MAX Cold Working Pressure	17 Bar

### Ever Grooved End Gate Valve OS&Y Rubber Coated Wedge

CODE	SIZE	FACE TO FACE	H	W	APPROX KG
EMGG/100	100	229	565	200	31
EMGG/150	150	267	775	280	60
EMGG/200	200	292	972	300	89

