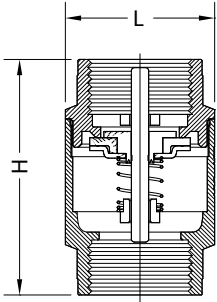




Section 16

**Check Valves  
& Strainers**

## Europa Spring Check Valve



MATERIALS	
PART	MATERIAL
Body	Brass CW 617N
Pin	Brass CW614N
Plate	Stainless Steel AISI 304
Seat	NBR
Spring	Stainless Steel AISI 302
Thrust Washer	RPTFE
Stem Packing	RPTFE/Graphite
Spring Collar	Stainless Steel
Handle Lockable	304 Stainless Steel

SPECIFICATIONS	
Thread	BSP
MAX Working Temperature	100°C
Cold Working Pressure	See below

Applications – Can be fitted in horizontal, vertical or oblique position.  
Suitable for Hot/Cold water, Oils.

Spring Type Check Valve Fig 100					
CODE	SIZE	H	L	APPROX KG	PRESSURE BAR
BVEC/010	10	55	34.5	0.109	25
BVEC/015	15	58.5	34.5	0.109	25
BVEC/020	20	65	41.5	0.142	25
BVEC/025	25	74.5	48	0.242	25
BVEC/032	32	83	60.5	0.367	18
BVEC/040	40	93	71	0.554	18
BVEC/050	50	101	87	0.824	18
BVEC/065	65	122	120	1.512	12
BVEC/080	80	141.5	140	2.513	12
BVEC/100	100	158.5	172.5	4.183	12

## Valstop Spring Check Valve

With Polymeric Resin Jumper/Plate. Minimum working pressure 0.05 Bar (5 kPa)

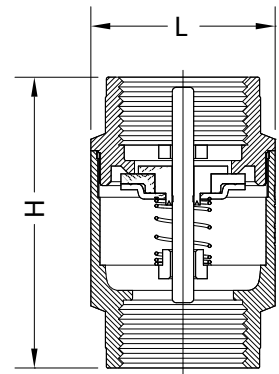
MATERIALS	
PART	MATERIAL
Body	Brass CW 617N
Plate	Polymeric resin
Seat	NBR
Spring	Stainless Steel AISI 302

SPECIFICATIONS	
Thread	BSP
MAX Working Temperature	100°C
Cold Working Pressure	See below

Applications – Can be fitted in horizontal, vertical or oblique position.  
Suitable for Hot/Cold water, Oils.



Spring Type Check Valve Fig H.0151					
CODE	SIZE	H	L	APPROX KG	PRESSURE BAR
BVVC/010	10	46.5	28	0.083	40
BVVC/015	15	50	34	0.147	40
BVVC/020	20	59	41.5	0.218	30
BVVC/025	25	67	50	0.34	30
BVVC/032	32	76	60.5	0.551	25
BVVC/040	40	90	73.5	0.913	25
BVVC/050	50	101	89	1.414	25
BVVC/065	65	127	114	2.519	15
BVVC/080	80	150	137	4.447	15



## Foot Valve Strainer

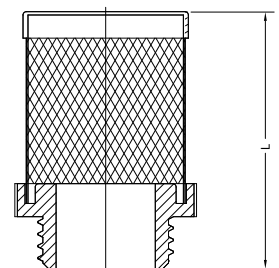
MATERIALS	
PART	MATERIAL
Body	Nylon
Mesh	304 Stainless Steel

SPECIFICATIONS	
Thread	BSP
MAX Working Temperature	100°C
Cold Working Pressure	See below

Applications – To convert Europa & Valstop Spring Check Valves to Foot Valves

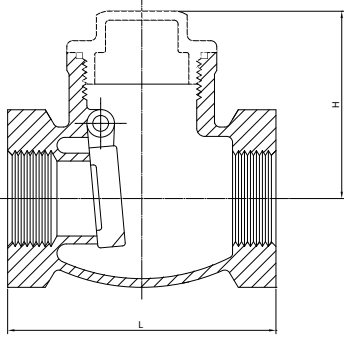


Stainless Filter Fig H 0157				
CODE	SIZE	L	MESH SIZE MICRONS	APPROX GRAMS
BVVS/010	10	46.5	1200µm	6
BVVS/015	15	50	1200µm	8
BVVS/020	20	57	1200µm	14
BVVS/025	25	62	1200µm	20
BVVS/032	32	68	1200µm	29
BVVS/040	40	78	1200µm	35
BVVS/050	50	90	1200µm	52
BVVS/065	65	97	2000µm	88
BVVS/080	80	110	2000µm	116
BVVS/100	100	128	2000µm	167



## Bonomi Brass Swing Check Valve

For horizontal installation



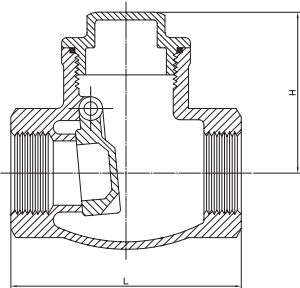
MATERIALS	
PART	MATERIAL
Body	Brass
Bonnet	Brass
Hinge Pin- Nut	Brass

SPECIFICATIONS	
Thread	BSP
MAX Working Temperature	200°C
Cold Working Pressure	12 bar

Applications- Oil, Water

Brass Swing Check Valve Bonomi Clapet					
METAL SEAT CODE	NBR RUBBER SEAT CODE	SIZE	H	L	APPROX KG
BVCSM/015	BVCS/015	15	50	47	0.142
BVCSM/020	BVCS/020	20	55	53	0.2
BVCSM/025	BVCS/025	25	58	63	0.343
BVCSM/032	BVCS/032	32	80	70	0.425
BVCSM/040	BVCS/040	40	87	88	0.76
BVCSM/050	BVCS/050	50	105	97	1
BVCSM/065		65	128	120	1.65

## Stainless Steel Swing Check Valve



MATERIALS	
PART	MATERIAL
Body	SS CF8M
Bonnet	SS CF8M
Hanger Pin	316 Stainless Steel
Disc	CF8M
Plug	316 Stainless Steel
Plug Gasket	PTFE

SPECIFICATIONS	
Thread	BSP
MAX Working Temperature	230°C
Cold Working Pressure	13.6 Bar

Applications – Water, Oil, Chemicals, Corrosive Environment and Liquids

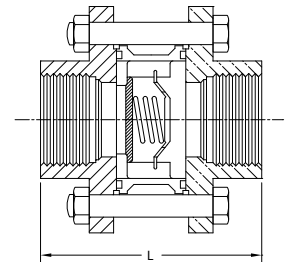
Stainless Steel Check Valve 316 BSP fig TC511				
CODE	SIZE	H	L	APPROX KG
HSCVSS/015	15	61.8	65	0.36
HSCVSS/020	20	71.1	80	0.43
HSCVSS/025	25	84	80	0.65
HSCVSS/032	32	95	105	0.93
HSCVSS/040	40	109	120	1.49
HSCVSS/050	50	120	139	2.15

## Stainless Steel 3 Piece In-line Spring Check Valve

MATERIALS	
PART	MATERIAL
Body	CF8M
Disc	CF8M
Spring	316 Stainless Steel
Spring Cap	CF8M
Cap	CF8M
Joint Gasket	PTFE

SPECIFICATIONS	
Thread	BSP
MAX Working Temperature	180°C
Cold Working Pressure	63 bar

Applications – Water, Oil, Air, Gases, Chemicals, Corrosive Environment and Liquids.



316 Stainless Steel 3 Piece Spring Check Valve Fig TC63			
CODE	SIZE	L	APPROX KG
VMCV/015	15	65	0.4
VMCV/020	20	70	0.6
VMCV/025	25	78	0.8
VMCV/032	32	96	1.6
VMCV/040	40	102	2
VMCV/050	50	118	3.2

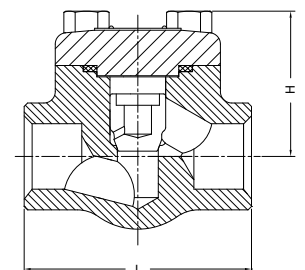
## DK Forged Steel Class 800 Piston Check Valve Socket Weld Ends

Socket Weld Ends

MATERIALS	
PART	MATERIAL
Body	ASTM A105
Bonnet	ASTM A105
Gasket	SS304+Graphite
Disc	A217-CA15
Seat	H/F Stellite

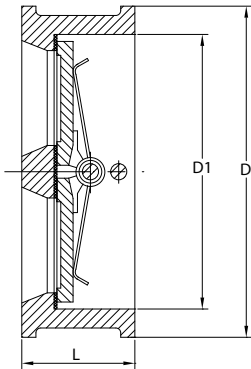
SPECIFICATIONS	
Design	ANSI B16.34
Socket weld End	ANSI B16.11
MAX Working Temperature	538°C
Cold Working Pressure	136 Bar

Applications – Steam, Oil, Petro Chemical Industry.



Forged Steel Piston Check Valve Fig LC3GHA				
CODE	SIZE	L	H	APPROX KG
DKVCHSW/015	15	73	51	1.2
DKVCHSW/020	20	87	55	1.3
DKVCHSW/025	25	96	65	2.1
DKVCHSW/032	32	123	76	4
DKVCHSW/040	40	143	84	4.7
DKVCHSW/050	50	163	101	7.1

## A-Check Wafer Check Valve (Dual Disc)

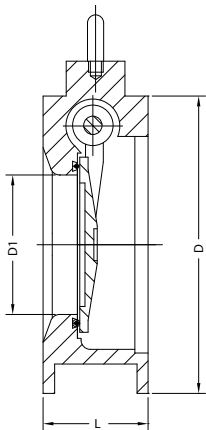


MATERIALS	
PART	MATERIAL
Body	Cast Iron
Spring	316 SS
Disc	304/316 SS
Seat	EPDM/NBR
Shaft	304/316 SS
Flange Gasket	NBR

SPECIFICATIONS	
Fits Flanges	T/E, ANSI 125, PN16
MAX Working Temperature NBR	80°C
MAX Working Temperature EPDM	120°C
Cold Working Pressure	16 Bar

Wafer Check Valve (Dual Disc)							
EPDM SEAT 304SS DISC	EPDM SEAT 316SS DISC	NBR SEAT 304SS DISC	SIZE	D	D1	L	APPROX KG
ACVCI/050	ACVCI316/050	ACVB/050	50	96	65	43	1.4
ACVCI/065	ACVCI316/065	ACVB/065	65	109	80	48	1.8
ACVCI/080	ACVCI316/080	ACVB/080	80	128	94	64	3
ACVCI/100	ACVCI316/100	ACVB/100	100	160	117	64	4.4
ACVCI/125	ACVCI316/125	ACVB/125	125	191	145	70	6.4
ACVCI/150	ACVCI316/150	ACVB/150	150	213	170	76	8.6
ACVCI/200	ACVCI316/200	ACVB/200	200	270	224	89	14.8
ACVCI/250	ACVCI316/250	ACVB/250	250	333	265	114	22
ACVCI/300	ACVCI316/300	ACVB/300	300	381	312	114	30
ACVCI/350	ACVCI316/350	ACVB/350	350	445	360	127	48
ACVCI/400	ACVCI316/400	ACVB/400	400	496	410	140	65

## A-Check Wafer Check Valve (Single Disc)



MATERIALS	
PART	MATERIAL
Body	Cast Iron
Spring	316 Stainless Steel
Disc	304 Stainless Steel
Seat	EPDM
Flange Gasket	NBR
Hinge Pin	304 Stainless Steel

SPECIFICATIONS	
Flange	AS2129 T/E
MAX Working Temperature	120°C
Cold Working Pressure	16 Bar

Applications – Water & Oil

Wafer Check Valve (Single Disc)					
CODE	SIZE	D	D1	L	APPROX KG
ACVSW/050	50	96	33.3	44.5	1.8
ACVSW/065	65	109	42.9	47.6	2.4
ACVSW/080	80	128	52.4	50.8	3
ACVSW/100	100	160	76.2	57.2	5.3
ACVSW/125	125	191	95.3	63.5	7.2
ACVSW/150	150	213	120.7	69.9	9.1
ACVSW/200	200	270	163.5	73	14.5
ACVSW/250	250	333	193.7	79.4	23.5
ACVSW/300	300	381	241.3	85.7	34.8
ACVSW/350	350	448	266.3	108.0	71
ACVSW/400	400	499	317.5	108.0	91

Applications – Water & Oil.  
Supplied complete with Rubber Flange Gasket.

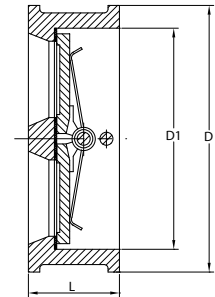
## Asmuss SS316 Class 150 Wafer Check Valve (Dual Disc) Metal Seat

MATERIALS	
PART	MATERIAL
Body	A351 CF8M
Spring	316 SS
Discs	A351 CF8M
Shaft	316 SS
Seat	A351 CF8M

SPECIFICATIONS	
Flange to suit	ANSI 150
MAX Working Temperature	180°C
Cold Working Pressure	19 Bar



Asmuss 316SS Wafer Check Valve (Dual Disc)					
CODE	SIZE	D	D1	L	APPROX KG
ACVSS/050	50	105	65	60	2
ACVSS/065	65	124	80	73	3.1
ACVSS/080	80	137	94	89	3.5
ACVSS/100	100	175	117	114	5.5
ACVSS/150	150	222	170	168	10
ACVSS/200	200	279	224	219	19.5



## HIWA Rubber Coated Ball Check Valve Flanged Ends

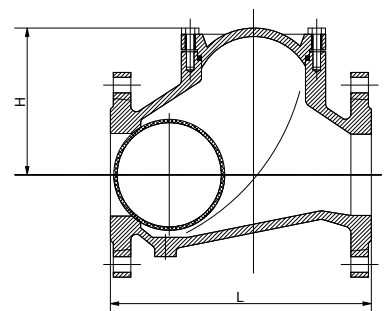
MATERIALS	
PART	MATERIAL
Body	Ductile Iron
Cover	Ductile Iron
Ball	Metal + NBR
Gasket	EPDM

SPECIFICATIONS	
MAX Working Temperature	80°C
Cold Working Pressure	16 Bar
Flanges	AS2129 T/E & D



Applications – Waste Water Treatment Plants

Rubber Coated Seat Flanged Ball Check Valve (Table E & Size 100mm T/D) Fig CB100F					
CODE	SIZE	L	H	APPROX KG	
ACVBCF/050	50	200	100	6.5	
ACVBCF/065	65	240	125	11	
ACVBCF/080	80	260	136	14.4	
ACVBCF/100	100	300	185	20	
ACVBCF/100D	100	300	185	20	
ACVBCF/150	150	400	265	42.3	



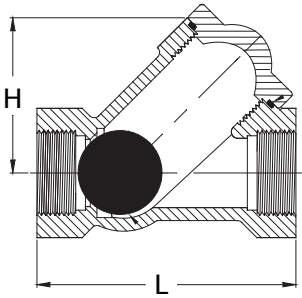
## HIWA Rubber Coated Ball Check Valve Screwed Ends



MATERIALS	
PART	MATERIAL
Body	Ductile Iron
Cover	Ductile Iron
Ball	Metal + NBR
Gasket	EPDM

SPECIFICATIONS	
MAX Working Temperature	80°C
Cold Working Pressure	16 Bar
Ends	BSP

Applications – Waste Water Treatment Plants



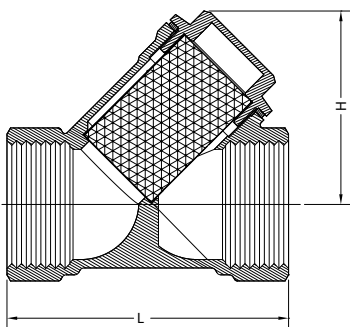
Resilient Seat Screwed Ball Check Valve Fig CB100S				
CODE	SIZE	L	H	APPROX KG
ACVBC/050	50	175	100	3
ACVBC/065	65	200	125	5
ACVBC/080	80	248	160	7.5

## Itap Brass 'Y' Strainer



MATERIALS	
PART	MATERIAL
Body & Cap	Brass
Mesh	Stainless Steel

SPECIFICATIONS	
Thread	BSP
MAX Working Temperature	110°C
Cold Working Pressure	20 Bar



Brass Y Strainer Fig 192					
CODE	SIZE	L	H	FILTRATION LEVEL MICRONS	APPROX KG
BYS192/015	15	58	40	500	0.15
BYS192/020	20	70	48	500	0.24
BYS192/025	25	87	56	500	0.395
BYS192/032	32	96	64	500	0.7
BYS192/040	40	106	73	500	0.86
BYS192/050	50	126	89	500	1.33



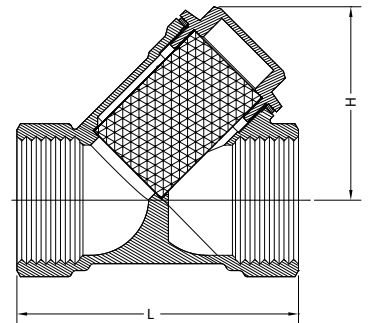
## Peakflo Bronze 'Y' Strainer

MATERIALS	
PART	MATERIAL
Body & Cap	Bronze
Mesh	Stainless Steel

SPECIFICATIONS	
Thread	BSP
MAX Working Temperature	170°C
Cold Working Pressure	20 Bar



Bronze 'Y' Strainer Fig 654					
CODE	SIZE	L	H	FILTRATION LEVEL MICRONS	APPROX KG
PYS/015	15	58	33	800	0.18
PYS/020	20	70	42	800	0.29
PYS/025	25	88	48	800	0.46
PYS/032	32	96	55	1200	0.7
PYS/040	40	107	61	1200	0.94
PYS/050	50	126	79	1200	1.51



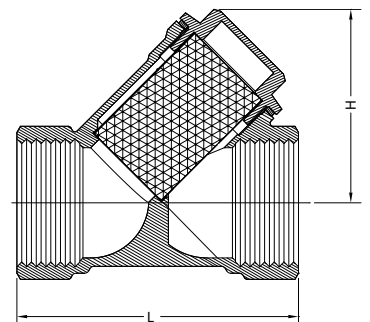
## Stainless Steel 'Y' Strainer

MATERIALS	
PART	MATERIAL
Body	CF8M
Cap	CF8M
Gasket	PTFE
Mesh	304 Stainless Steel

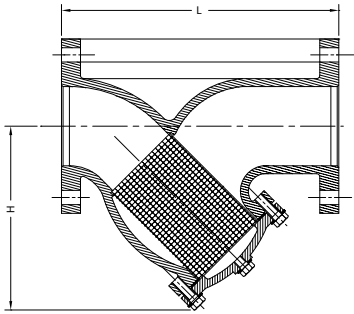
SPECIFICATIONS	
Thread	BSP
MAX Working Temperature	230°C
Cold Working Pressure	40 Bar



Stainless Steel 'Y' Strainer TC 611				
CODE	SIZE	L	H	APPROX KG
ABVS316/015	15	65	45	0.24
ABVS316/020	20	80	53	0.36
ABVS316/025	25	80	65	0.7
ABVS316/032	32	105	70	0.86
ABVS316/040	40	120	80	1.02
ABVS316/050	50	140	103	1.88



## Asmuss Cast Iron 'Y' Strainer



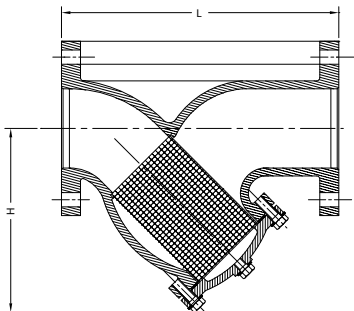
MATERIALS	
PART	MATERIAL
Body & Cover	Cast Iron (epoxy coated)
Screen	304 Stainless Steel
Gasket	Graphite
Plug	Malleable Iron

SPECIFICATIONS	
Flanged	AS2129 T/E
MAX Working Temperature	120°C
Cold Working Pressure	16 Bar

EFFECTIVE OPEN AREA		
SIZE	SCREEN OPENINGS	% OF INLET PIPE
50mm – 125mm	1.5mm diam	33%
150mm – 300mm	3mm diam	44%

Cast Iron Flanged 'Y' Strainer Table E				
CODE	SIZE	L	H	APPROX KG
HWS/050	50	225.4	154	10
HWS/065	65	273	184	14
HWS/080	80	292	208	19
HWS/100	100	352	240	33
HWS/125	125	416	300	48
HWS/150	150	470	325	55
HWS/200	200	543	400	90
HWS/250	250	660.4	485	169
HWS/300	300	762	565	245

## VM Carbon Steel Class 150lb 'Y' Strainer



MATERIALS	
PART	MATERIAL
Body & Cover	WCB
Screen	304 Stainless Steel
Gasket	PTFE
Plug	CF8M
Bolts	Carbon Steel

SPECIFICATIONS	
Flanged	ANSI 150
MAX Working Temperature	537°C
Cold Working Pressure	19 Bar

EFFECTIVE OPEN AREA	
SIZE	SCREEN OPENINGS
50mm – 300mm	2mm diam

VM Carbon Steel Class 150lb 'Y' Strainer				
CODE	SIZE	L	H	APPROX KG
VMYSCS/050	50	210	155	9
VMYSCS/065	65	250	189	14
VMYSCS/080	80	280	200	16
VMYSCS/100	100	340	232	28
VMYSCS/125	125	380	274	50
VMYSCS/150	150	420	326	73
VMYSCS/200	200	500	397	95
VMYSCS/250	250	730	512	200
VMYSCS/300	300	850	562	265